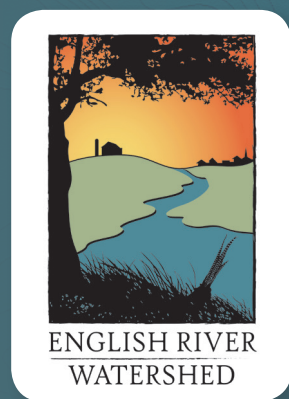


2018



# SUBWATERSHED TOOLKITS TOWN OF TILTON

HUC-12: 070802090501





# TABLE OF CONTENTS

|   |         |
|---|---------|
| Section 1: Planning Process.....                              | Page 3  |
| Section 2: 2018 Conservation Survey .....                     | Page 5  |
| Section 3: Water Quality Monitoring .....                     | Page 7  |
| Section 4: Soil Erosion .....                                 | Page 9  |
| Section 5: Agricultural Conservation Planning Framework ..... | Page 12 |
| Section 6: Hazard Mitigation .....                            | Page 14 |
| Section 7: Action Plan .....                                  | Page 17 |
| Acronyms, Acknowledgements, & Contact Information .....       | Page 19 |



*Funding for development and printing of this plan was provided by the [Iowa Watershed Approach](#).*

The Iowa Watershed Approach is a collaborative program that brings together local, state, federal, and private organizations to work together to address factors that contribute to floods and nutrient flows. Iowans will enjoy improvements in quality of life and health resulting from upstream watershed investments tied to community resilience activities. This adaptive model, supported by U.S. Housing and Urban Development (HUD) dollars, will leverage the principles of Iowa’s innovative Nutrient Reduction Strategy to make our communities more resilient to flooding and help improve water quality.

# SECTION 1: PLANNING PROCESS

The English River Watershed (ERW) completed “Phase 1” comprehensive watershed planning in 2015. The goal of this project was to take an inventory of the physical environment, complete hydrologic modeling on the basin scale (HUC-8), collect baseline water quality data, engage landowners in the planning process, and formulate watershed improvement recommendations based on data public input. The entire plan, titled the *English River Watershed Improvement and Resiliency Plan*, can be found on the English River Watershed website.

## PHASE 2 KEY QUESTIONS & OUTCOMES

Beginning in Fall 2017, the English River Watershed began the “Phase 2” subwatershed planning process, which was completed in December of 2018. The goal of this phase was to discover priority areas on the subwatershed level (HUC-12) for targeted implementation of cost-share funds. The plans are intended to introduce many of the tools and analyses that can be used by municipalities, SWCDs, the WMA, and other organizations when considering watershed improvement projects.

The ERW consists of 20 HUC-12 subwatersheds. Due to limitations on where funding could be spent for this project, if the majority of the subwatershed’s area overlapped Washington County it was not included and a Phase 2 plan was not created. Thus, 14 total subwatershed plans were developed. Table 1 shown below highlights the differences between the 9-step planning process in Phases 1 and 2.

Table 1. The 9-Step Planning Process for Phase 1 and Phase 2. *Source: ERW*

| Planning Step                             | Phase 1 Outcomes   | Phase 2 Key Questions  | Phase 2 Outcomes   |
|---|--|--|--|
| <b>1. Engage the Public</b>               | Determined of the community’s concerns and perceived threats to water quality and quantity.      | What concerns are specific to the HUC-12 subwatershed?   | Completed a mail survey to all 14 subwatersheds and gained input at various meetings and events.                         |
| <b>2. Inventory Resources</b>             | Determined the broad land uses, environmental characteristics, and history of the watershed.     | What data exists on the subwatershed level and can be analyzed in comparison between subwatersheds?        | Compiled data on soil erosion, flooding and social risks, water quality, and detailed urban land uses.                   |
| <b>3. Develop Problem Statements</b>      | Determined the broad causes and sources of impairments in the watershed.                         | What tools can be developed to provide support for watershed entities seeking grant or cost share funding? | Designed a “toolbox” of resources for watershed entities that address problems specific to each subwatershed.            |
| <b>4. Identify Target Conditions</b>      | Identified recommendations for HUC-8 scale watershed improvements to water quality and quantity. | What are the HUC-12 level specific water quality and quantity conditions?                                  | Analyzed historical erosion data, developed erosion potential maps, and completed 2 seasons of water quality monitoring. |
| <b>5. Develop Restoration Targets</b>     | Determined priority issues throughout the watershed through public participation.                | What is the potential for conservation practices (amount or type)?   | Completed the Agricultural Conservation Planning Framework (ACPF) and urban modeling.                                    |
| <b>6. Evaluate Alternatives</b>           | Prepared BMP benefits table with associated reductions in contaminants or flood volumes.         | What do the recommended practices achieve?   | Matrix for cost/benefits of urban/ rural practices and risk analysis based on community assets.                          |
| <b>7. Prepare the Implementation Plan</b> | Assigned responsibility to the WMA for continued research and pursuit of cost share funding.     | Who is responsible for implementing programs? Who can provide technical assistance?                        | Matrix for responsible parties, funding opportunities, and resources provided by ERW.                                    |
| <b>8. Implement the Plan</b>              | Physical and digital copies of the plan were delivered to watershed entities.                    | How will the results and recommendations of the plan be communicated to the public?                        | Physical and digital copies of the plan delivered to watershed entities and interactive webmaps.                         |
| <b>9. Evaluate the Plan</b>               | Determined a routine for updating the plan and monitoring implementation goals.                  | How will practices be measured and who will update the plan?   | Developed a monitoring plan, including metrics for success.  |

## ABOUT THE SUBWATERSHED

The Town of Tilton subwatershed is located in the north central region of the ERW. It overlaps two counties (Poweshiek and Iowa). There are no incorporated areas that overlap the subwatershed. The Town of Tilton subwatershed primarily consists of Mississippian soils and, in comparison to the entire ERW, features average depth to bedrock. The mean Corn Suitability Rating for the subwatershed is between 54-56.

Figure 1 is a location map of the subwatershed. The subwatershed encompasses 11,016 acres (17.2 square miles) of land, which is predominately row crops (corn and soybeans). An unnamed creek stretches approximately 12.68 miles through the subwatershed in northwest to southeast direction, and eventually meets the South English River about 7 miles south east of the City of Barnes City.

It was determined in Phase 1 planning that the primary resource concern in in the Town of Tilton subwatershed is nitrate and nitrite contamination. Additionally, the subwatershed ranked near the middle in comparison to all subwatersheds for annual flood risks. Watershed stakeholders also expressed their desire for routine water quality monitoring in all subwatersheds.

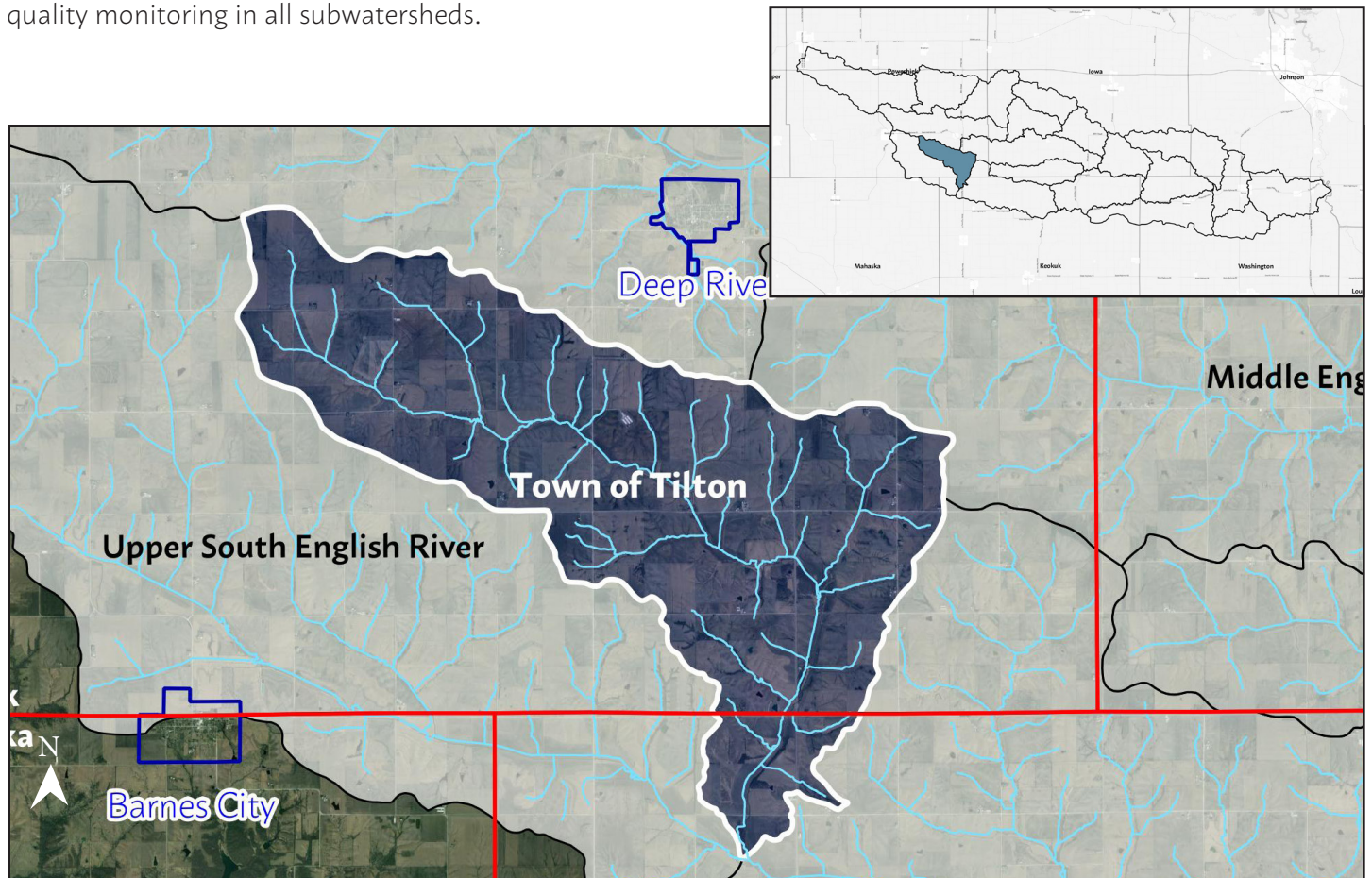


Figure 1. Town of Tilton Subwatershed Boundary Map. Source: ERW



# SECTION 2: 2018 CONSERVATION SURVEY

The English River Watershed completed the “2018 Conservation Survey” in the spring of 2018. The survey builds upon the landowner survey completed in Phase 1 and seeks to better understand the barriers farmers face when considering adoption of conservation practices.

A random sample of agricultural properties of at least 10 acres in size in the watershed were sampled via mail. The sample totaled 986 properties in Iowa, Poweshiek, Johnson, and Keokuk Counties. 264 surveys were completed, which is a response rate of 26.8 percent.

Among the entire sample, the majority of respondents indentified in the age group of 55 - 64 years old (27.7%). Table 2 shows the breakdown of farm size in the survey. Table 3 shows the breakdown of type of farm operations in the survey.

## CONSERVATION ADOPTION AND WILLINGNESS

The survey first sought to understand which conservation practices are currently being implemented and which practices, dependent on availability of cost-share funding, are in demand. This information allows conservation organizations to provide more relevant information to landowners. Figure 2 shows the number of respondents that have tried a specific practice (green bars) and the number of respondents who would try specific practices with the availability of 75 percent cost-share (blue bars).

Table 2. Farm size in survey sample. Source: ERW

| Farm Size            | % of Respondents |
|----------------------|------------------|
| Less than 25 acres   | 7%               |
| 25 - 75 acres        | 14%              |
| 75 - 250 acres       | 32%              |
| 250 - 500 acres      | 21%              |
| 500 - 1,000 acres    | 13%              |
| More than 1,000 acre | 13%              |

Table 3. Type of farm operation in survey sample. Source: ERW

| Crops/Livestock | Number of Respondents / % of Sample |
|-----------------|-------------------------------------|
| Corn            | 211 / (35.2%)                       |
| Soybeans        | 210 / (35.1%)                       |
| Hogs            | 30 / (5.0%)                         |
| Beef Cattle     | 68 / (11.4%)                        |
| Dairy Cattle    | 11 / (1.8%)                         |
| Other           | 69 / (11.5%)                        |

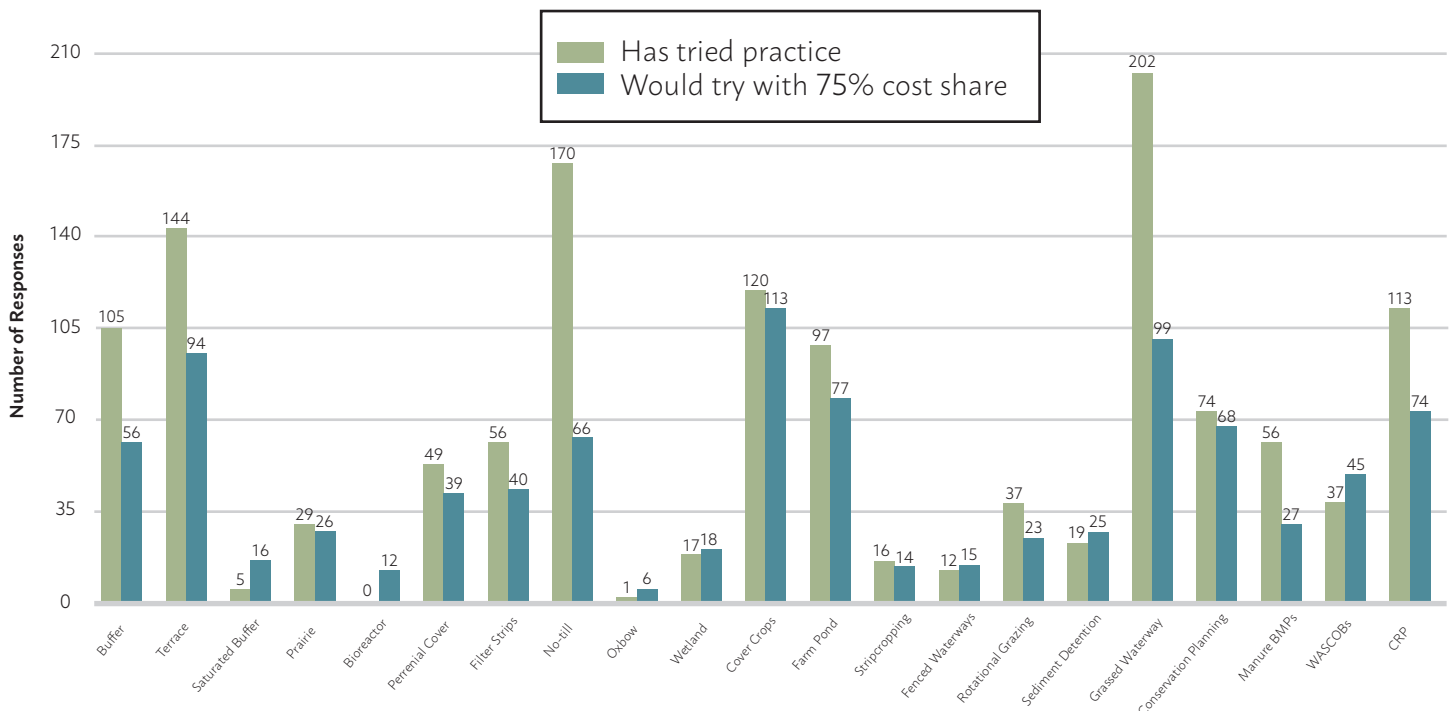


Figure 2. Conservation adoption and willingness to adopt conservation practices with cost share among survey sample. Source: ERW



## CONSERVATION ORGANIZATIONS

Farmers face a plethora of options when seeking information about conservation. This situation can lead to confusion among various conservation organizations and produce conflicting information. Table 4 shows survey respondent's familiarity with the purpose of each group and how respondents are interacting with various groups in Iowa.

Table 4. Familiarity with organizational purposes and groups distributing conservation information among survey sample. *Source: ERW*

| Organization  | Mean Familiarity with Mission or Purpose (5 = Very Familiar) | Distribution of Conservation Information (Total # of Responses) |
|---|--|---|
| Natural Resource Conservation Service               | 3.21   | 140   |
| Iowa Department of Natural Resources                | 3.16   | 67  |
| County Conservation                                 | 2.99   | 71  |
| Iowa State University Extension and Outreach        | 2.81   | 83  |
| Iowa Department of Agriculture and Land Stewardship | 2.70   | 57  |
| Soil and Water Conservation District                | 2.67   | 84  |
| English River Watershed                             | 2.40   | 61  |
| Iowa Flood Center                                   | 1.49   | N/A   |
| Crop Advisor  | N/A  | 22  |
| Growers or Producers Associations                   | N/A  | 33  |
| Fertilizer or Agricultural Products Dealer          | N/A  | 35  |

## BARRIERS TO CONSERVATION

Finally, the survey attempted to uncover barriers to conservation according to farmers in the watershed. Figure 5 displays the respondent's level of agreement with various statements related to conservation and Table 5 shows some of the barriers that exist for farmers considering adopting conservation practices. Data specific to Iowa and Keokuk Counties can be found in the full report at the link below.



Figure 5. Mean level of agreement among conservation statements. *Source: ERW*

Table 5. Top barriers to conservation identified by survey sample. *Source: ERW*

| Rank | Barrier   | # of Responses |
|------|---|----------------|
| 1    | Cost of practice  | 142            |
| 2    | Too many "strings attached" with state/federal programs | 116            |
| 3    | Loss of productive land / impact on yields              | 74             |
| 4    | Uncertainty of crop values year to year                 | 52             |
| 5    | Maintenance plans are too strict or confusing           | 38             |
| 6    | Unsure of actual environmental benefits                 | 28             |
| 7    | Other   | 14             |

**VIEW ENTIRE "2018 CONSERVATION SURVEY" REPORT:**  
<http://www.englishriverwma.org/subwatershed-plans/survey>



# SECTION 3: WATER QUALITY MONITORING

Stakeholders in the ERW identified continued water quality monitoring as the organization's number one priority during the Phase 1 comprehensive planning process. Long-term water quality monitoring is essential in the establishment of reliable water quality baselines and changes over time and in assessing the effectiveness of targeted implementation projects.

Sampling Site 17 is near the outlet of the Town of Tilton subwatershed. The sampling site is located on the 110th Street bridge over an unnamed creek in the extreme NW corner of Keokuk County, just a little NE of the South English River and the City of Gibson (Figure 4).

Water quality snapshots, 5 samples in total, were conducted in 2014 during Phase 1 planning. Samples were collected and analyzed by the Iowa Soybean Association. Samples taken in 2017 and 2018 were collected by ERW staff and analyzed at the State Hygienic Laboratory. Both the 2017 and 2018 monitoring season were funded through the Iowa Watershed Approach.

## MONITORING RESULTS

Tables 6, 7, 8, and 9 shown on the following page display monthly concentration minimums, maximums, and averages for E.Coli, orthophosphate, total phosphorus, and nitrate and nitrite, respectively, at the Deep River sampling location. An overabundance of these contaminants in the watershed is a resource concern because of their ability to negatively impact plants, wildlife, and human health through poor water quality. Values in red exceed standards for freshwater streams as defined by the Environmental Protection Agency (EPA). A more detailed explanation on standards for each of the contaminants can be found on the English River Watershed website.

During the 2017 sampling season (June 7 – December 18), the site was sampled 4 times for Nitrate+Nitrite as N, 4 times for E. coli Bacteria, 3 times for ortho-Phosphate as P, and 4 times for Total Phosphorus as P. During the 2018 sampling season (March 23 – September 4), Site 17 was sampled 3 times for Nitrate+Nitrite as N, 3 times for E. coli Bacteria, 2 times for ortho-Phosphate as P, and 3 times for Total Phosphorus as P. 2017 sampling events occurred at regular intervals between June 7 – December 18. Sampling events in 2018 occurred at regular intervals between March 23 – September 17.

In 2017, Site 17 ranked 19th (nearly the lowest) of the English River's 20 subwatersheds for its seasonal average E. coli Bacteria values. In 2018, Site 17 ranked 16th. Values in red exceed the Iowa beach advisory/health standards of 235 CFUs/100mL.

In 2017, Site 17 ranked 17th of the English River's 20 subwatersheds for its seasonal average ortho-Phosphate as P values. In 2018, Site 17 ranked 19th (nearly the lowest).

In 2017, Site 17 ranked 17th of the English River's 20 subwatersheds for its seasonal average Total Phosphorus as P values. In 2018, Site 17 ranked 20th (the lowest). Values in red exceed EPA standard of 0.075 mg/L for freshwater streams.

In 2017, Site 17 ranked 5th of the English River's 20 subwatersheds for its seasonal average Nitrate+Nitrite as N values. In 2018, Site 17 ranked 13th. Values in red exceed EPA drinking water standard of 10 mg/L.

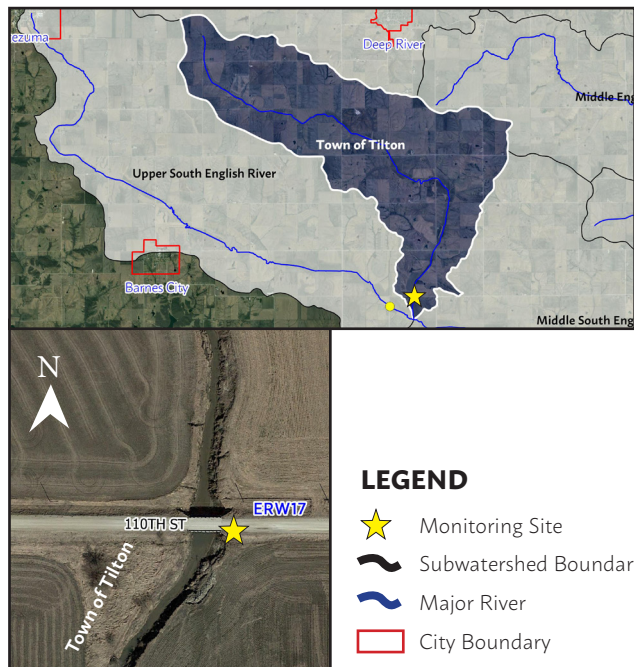


Figure 4. Water quality monitoring location for Town of Tilton subwatershed. Source: ERW



Table 6. E.Coli ([CFUs]/100mL) monitoring results by monthly averages at ERW 17 (2017-2018). *Source: ERW*

| Year | Min | Max   | Average |
|------|-----|-------|---------|
| 2017 | 110 | 700   | 423     |
| 2018 | 20  | 1,400 | 700     |

Table 7. Ortho-Phosphate as P (mg/L) monitoring results by monthly averages at ERW 17 (2017-2018). *Source: ERW*

| Year | Min  | Max  | Average |
|------|------|------|---------|
| 2017 | 0.00 | 0.05 | 0.03    |
| 2018 | 0.03 | 0.04 | 0.04    |

Table 8. Total Phosphorus as P (mg/L) monitoring results by monthly averages at ERW 17 (2017-2018). *Source: ERW*

| Year | Min  | Max  | Average |
|------|------|------|---------|
| 2017 | 0.08 | 0.17 | 0.14    |
| 2018 | 0.08 | 0.13 | 0.10    |

Table 9. Nitrate + nitrite as N (mg/L) monitoring results by monthly averages at ERW 17 (2017-2018). *Source: ERW*

| Year | Min | Max  | Average |
|------|-----|------|---------|
| 2017 | 0.3 | 15.0 | 4.2     |
| 2018 | 2.8 | 5.9  | 4.1     |

## DATA AVAILABILITY

All water quality monitoring data collected during Phase 1 and Phase 2 is publicly available and accessible on the English River Watershed website. Watershed staff are able to create graphs and charts upon request that can be used to support grant applications or other funding opportunities. Figure 5 shown below is an example of how water quality monitoring results can be reproduced for the various contaminants tested shown above, including results from transparency field tests.

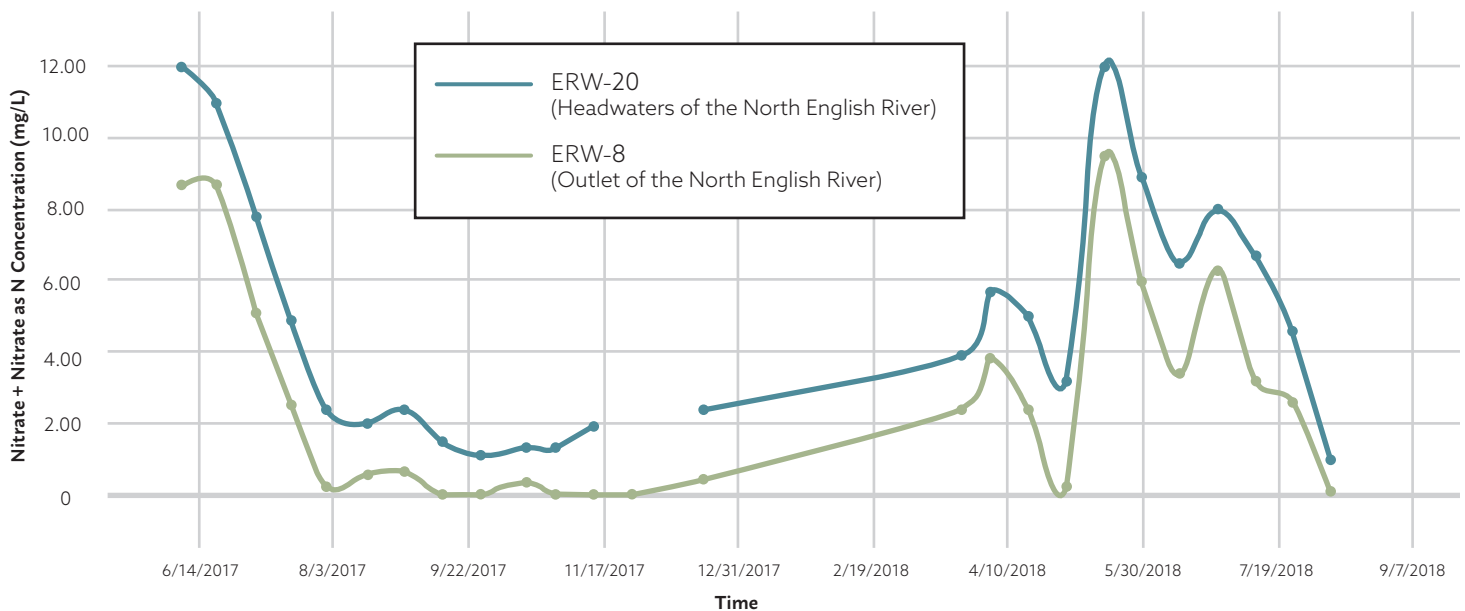


Figure 5. Example graph of Nitrate + Nitrite as N monitoring results for Sites 20 and 8 in the ERW. (2017-2018). *Source: ERW*

**VIEW INTERACTIVE WATER QUALITY MONITORING MAP:**  
<http://www.englishriverwma.org/water-quality-monitoring-1>

# SECTION 4: SOIL EROSION

The ERW *Resiliency and Improvement Plan* seeks to reduce soil loss from farm fields, urban areas, and construction sites through best management practices that promote soil retention and stability. In order to target specific areas of concern where practices would be most beneficial, a deeper understanding of soil erosion on the subwatershed level is necessary. Data presented in the following analysis was provided by the Iowa State University Daily Erosion Project (DEP), at <https://dailyerosion.org/map>. The illustration below shows what is modeled by the DEP in comparison to visible gulley erosion.

## SOIL EROSION

One method for estimating erosion is to calculate the average amount of water that left the hillslopes by above ground transport. Figure 6 shown below portrays monthly variation in average erosion in the Town of Tilton subwatershed. As indicated by the linear trendline, estimated erosion from 2008 to 2016 appears to be increasing. Flooding in April of 2013 generated over 7 times the total erosion (118.86 mm) than Town of Tilton’s average monthly erosion of 12.89 mm (0.50 inches).

Subwatersheds are identified by the last 3 digits of their 12-digit hydrologic unit code (HUC) in Table 10. For example, Town of Tilton’s HUC is “070802090501”; see 501 Table 10 below.

Table 10. Estimated Average Monthly Soil Runoff and Average Monthly Precipitation (2008-2016). *Source: DEP*

|                                    | 405   | 404   | 402   | 302   | 401   | <b>501</b>   | 403   | 502   | 301   | 406   | 408   | 407   | 503   | 504   |
|------------------------------------|-------|-------|-------|-------|-------|--------------|-------|-------|-------|-------|-------|-------|-------|-------|
| Average Monthly Soil Runoff (mm)   | 13.43 | 13.42 | 13.28 | 13.05 | 13.02 | <b>12.89</b> | 12.76 | 12.75 | 12.59 | 12.26 | 12.24 | 12.23 | 11.78 | 10.80 |
| Average Monthly Precipitation (mm) | 82.68 | 81.97 | 80.54 | 83.21 | 79.25 | <b>82.04</b> | 81.65 | 82.23 | 83.68 | 82.65 | 83.17 | 84.61 | 82.92 | 82.29 |

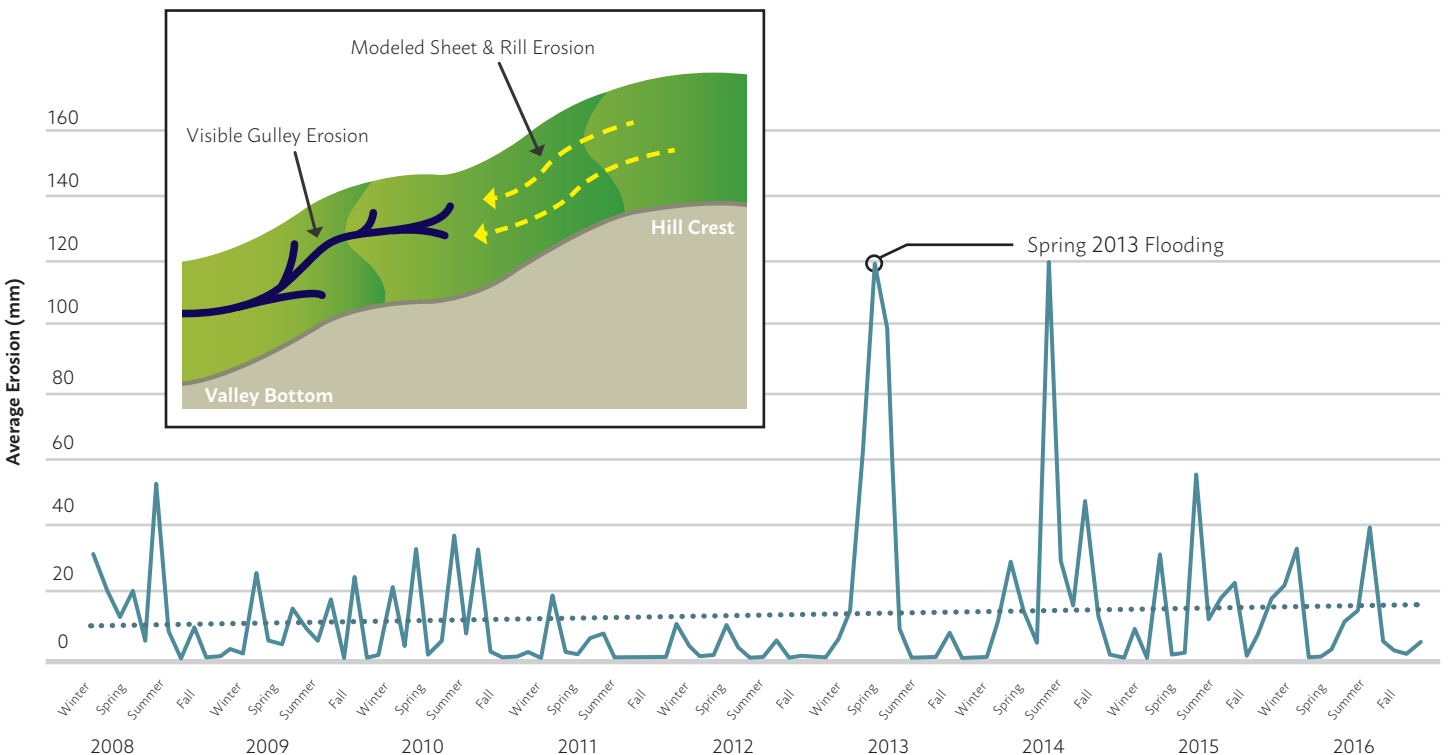


Figure 6. Soil Erosion in Town of Tilton (2008-2016). *Source: DEP*



## SOIL DETACHMENT & DELIVERY

Detachment is the amount of soil that is disturbed on the hillslopes during various rain events. For this analysis, historic flooding in 2013 was utilized for comparison among subwatersheds regarding their ability to hold soil. The Town of Tilton subwatershed experienced an average of 4.66 tons per acre of disturbed soil during the given flood period. By comparison, the average soil detachment among the 14 subwatersheds was 6.47 tons per acre. This data is shown below (Figure 7) as light green bars.

Soil delivery is the average amount of soil transported to the bottom of hillslopes. Blue bars in the bar graph shown below (Figure 7) display average soil delivery from 2008 to 2016. The Town of Tilton subwatershed ranks near below average of all subwatersheds for soil delivery at 5.32 tons per acre per year. It is estimated that erosion rates in Iowa are about 5.1 tons per acre per year (Mike Duffy, 2012). Based on this average, soil loss in the Town of Tilton subwatershed is above the state average and below the average (7.00 tons per acre per year) of all subwatersheds in the English River Watershed.

All data presented in this section is publicly available via an interactive webmap hosted by the DEP. Visit the link below to access soil erosion data specifically for the Town of Tilton subwatershed.

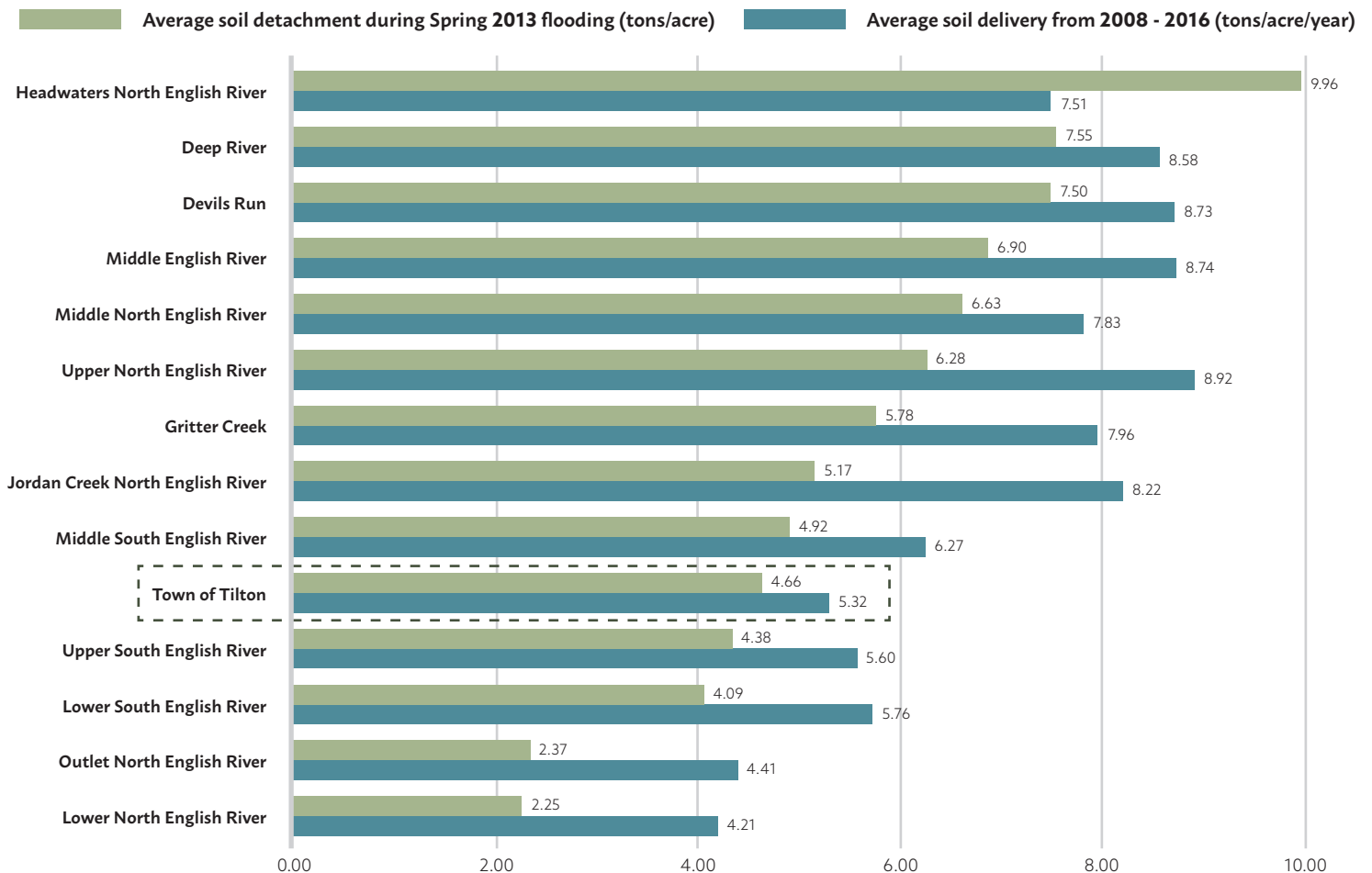


Figure 7. Soil Delivery and Detachment in Town of Tilton (2008-2016). Source: DEP

**VIEW DAILY EROSION PROJECT FOR TOWN OF TILTON:**  
<https://bit.ly/2P714R5>

Source: Duffy, Mike. Value of Soil Erosion to the Land Owner, August 2012. <https://www.extension.iastate.edu/agdm/crops/pdf/a1-75.pdf>

## SOIL EROSION POTENTIAL

The following analysis uses the Natural Resource Conservation Service's (NRCS), formerly the Soil Conservation Service (SCS), curve number (CN) runoff equation to spatially illustrate the potential for soil erosion in the subwatershed. The equation examines the interaction between land cover type and hydrologic soil type to estimate runoff from a specific storm event. This analysis was completed by a group of graduate students through a partnership University of Iowa Urban and Regional Planning Department.

For this analysis, a 2-year storm event is assumed, which equals 1.41 inches of rain in 1 hour. This analysis *predicts* soil erosion and is merely a model that uses the best available data. Such data may still be outdated or contain inaccuracies. The model also assumes specific runoff percentages that may not truly represent all storm scenarios. The goal of this assessment is to highlight "problem areas" in the subwatershed where BMPs would likely have the most impact.

Figure 8 shows "High" runoff potential in dark orange colors and "Low" runoff potential in lighter shades. In the Town of Tilton subwatershed, the higher areas of runoff potential are located primarily along the banks of upstream tributaries. An interactive webmap of this data is available on the ERW website. Click the link below to view the map.

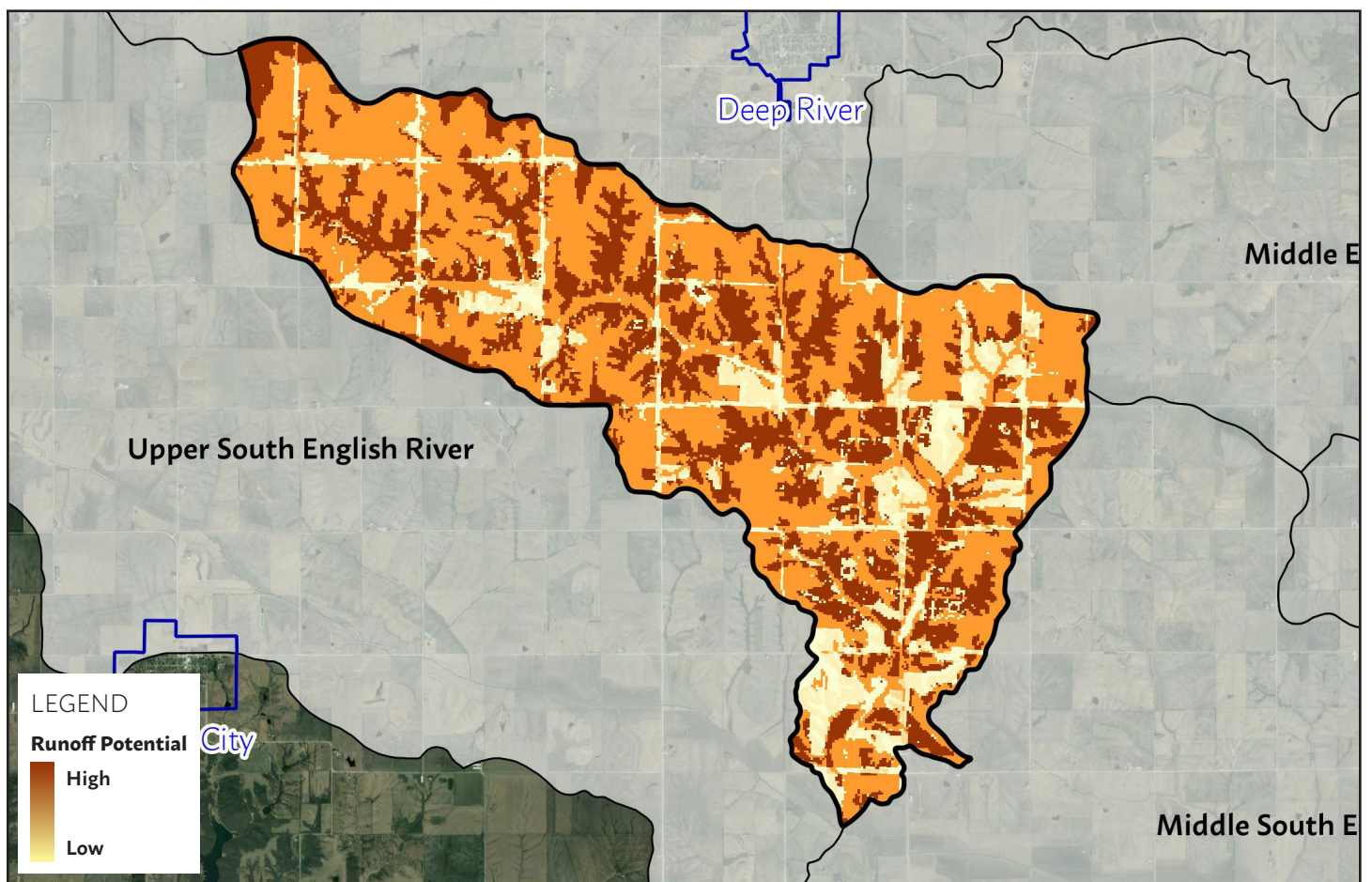


Figure 8. SCS-CN Runoff Potential Model for Town of Tilton Subwatershed. Source: ERW

**VIEW SOIL EROSION POTENTIAL WEBMAP FOR TOWN OF TILTON:**  
<http://www.englishriverwma.org/subwatershed-plans/erosion>



# SECTION 5: AGRICULTURAL CONSERVATION PLANNING FRAMEWORK

The Agricultural Conservation Planning Framework (ACPF) is a digital toolbox watershed planning and research. Utilizing a geographic information system (GIS), ACPF processes topographic data for terrain in the watershed. These data can determine land and agricultural fields within a watershed that are most prone to contribute runoff to streams. Furthermore, ACPF can identify where in-field and edge-of-field practices could be installed throughout the watershed. Such practices include surface intake filters, restored wetland, grassed waterways, buffer strips, water and sediment control basins (WASCOBs), bioreactors, saturated buffers, and floodplain reconnections. The Iowa Flood Center executed the ACPF for all subwatersheds in the English River Watershed as part of the Phase II planning project.

## POTENTIAL BEST MANAGEMENT PRACTICES

According to the ACPF results, there exists the potential for 271.67 miles of contour buffer strips, 18 bioreactors, 246 WASCOBs, 6 nutrient-removal wetlands, a total of 1,106.28 acres of drainage area for the wetlands, and 101.12 miles of grassed waterways in the Town of Tilton subwatershed (Table 11). If all 6 wetlands were installed in the subwatershed, roughly 10.0 percent of the subwatershed drainage area would be treated. These practices are spatially depicted in Figure 9. In order to see the map in greater detail and to locate the exact position of potential practices, access the ACPF webmap via the link on the following page. Locations for BMPs are not prioritized in this analysis. Further analysis is needed to determine which practices present the highest potential.

Actual implementation of practices in the subwatershed was also analyzed in comparison to potential practices identified by the ACPF tool. Refer to the Iowa Flood Center’s full report for a complete analysis, which can be found on the English River WMA website.

Table 11. Count of Potential Best Management Practices as identified by ACPF in the ERW by subwatershed. *Source: Iowa Flood Center*

| HUC-12     | Area (acres)  | CBS (miles)   | Bio-reactors | WASCOBs    | Nutrient Removal-Wetlands | Wetland Drainage (Acres) | % of HUC-12   | Grassed Waterways (miles) |
|------------|---------------|---------------|--------------|------------|---------------------------|--------------------------|---------------|---------------------------|
| 301        | 14,836        | 389.52        | 23           | 255        | 7                         | 1,728.87                 | 11.7 %        | 35.18                     |
| 302        | 29,845        | 693.60        | 53           | 464        | 14                        | 2,520.01                 | 8.5 %         | 104.88                    |
| 401        | 36,075        | 885.55        | 80           | 826        | 39                        | 8,608.98                 | 23.8 %        | 313.86                    |
| 402        | 19,076        | 381.94        | 49           | 245        | 2                         | 348.79                   | 1.8 %         | 58.52                     |
| 403        | 26,535        | 579.03        | 65           | 393        | 5                         | 1,156.23                 | 4.4 %         | 91.17                     |
| 404        | 19,540        | 328.89        | 36           | 195        | 5                         | 903.01                   | 4.6 %         | 137.75                    |
| 405        | 13,007        | 155.69        | 8            | 113        | 1                         | 226.90                   | 1.7 %         | 57.89                     |
| 406        | 12,841        | 79.46         | 27           | 65         | 0                         | 0                        | 0.0 %         | 120.80                    |
| 407        | 12,611        | 107.77        | 20           | 66         | 1                         | 183.03                   | 1.5 %         | 28.28                     |
| 408        | 14,193        | 185.31        | 12           | 89         | 5                         | 1,004.06                 | 7.1 %         | 43.37                     |
| <b>501</b> | <b>11,016</b> | <b>271.67</b> | <b>18</b>    | <b>246</b> | <b>6</b>                  | <b>1,106.28</b>          | <b>10.0 %</b> | <b>101.12</b>             |
| 502        | 18,411        | 414.42        | 33           | 444        | 18                        | 3,699.51                 | 20.1 %        | 148.87                    |
| 503        | 27,397        | 615.76        | 37           | 451        | 8                         | 1,687.15                 | 6.2 %         | 190.94                    |
| 504        | 25,728        | 533.86        | 49           | 291        | 1                         | 158.05                   | 0.6 %         | 98.27                     |

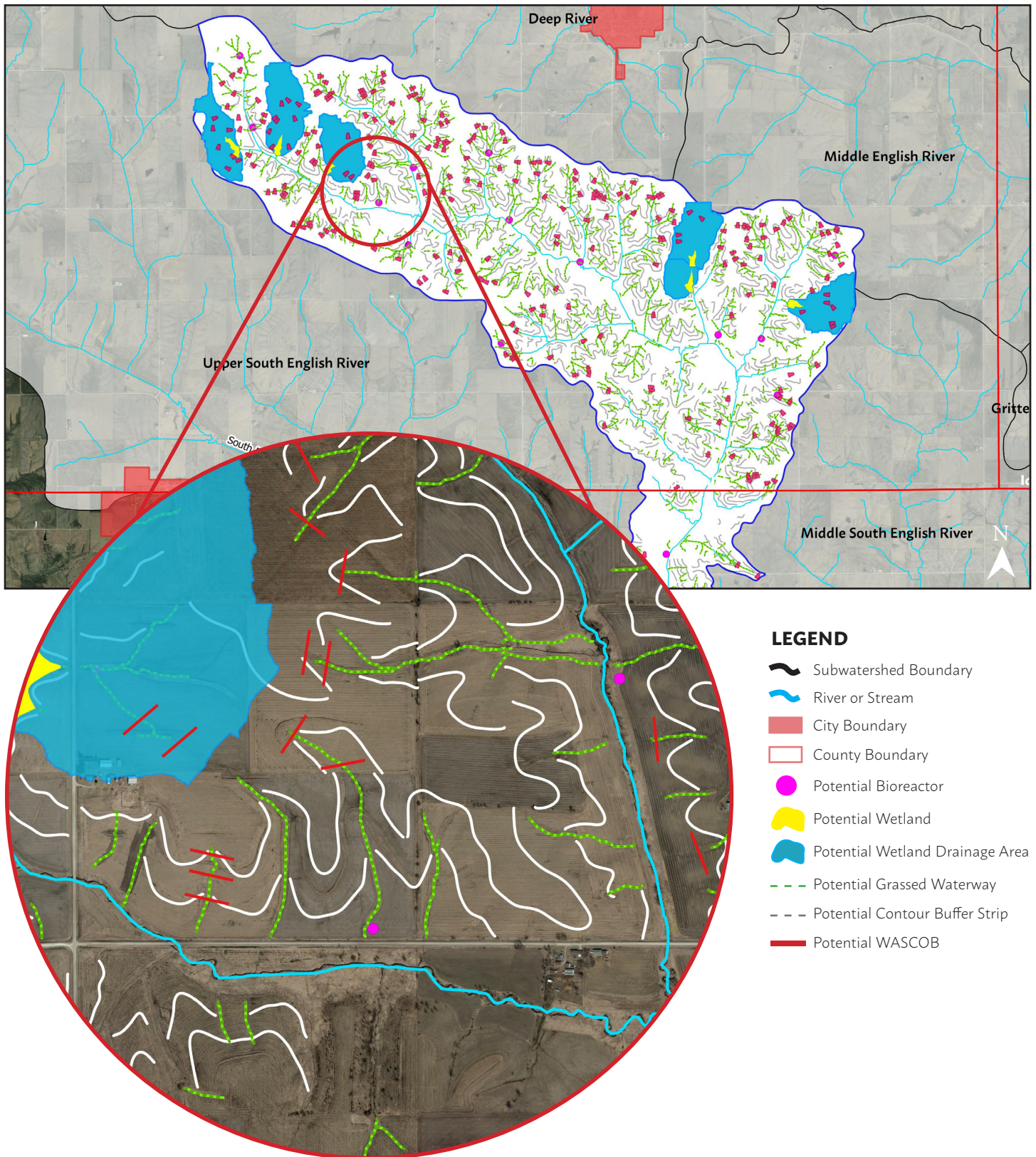


Figure 9. ACPF Model Results for Town of Tilton Subwatershed. Source: Iowa Flood Center

**VIEW ACPF WEBMAP FOR TOWN OF TILTON:**  
<http://www.englishriverwma.org/subwatershed-plans/acpf>



# SECTION 6: HAZARD MITIGATION

Hazard mitigation planning is defined as the effort to reduce loss of life and property by lessening the impact of disasters. Most counties in Iowa are required to complete a county-wide Hazard Mitigation Plan, which makes the county and its cities eligible for federal funding for emergency and non-emergency disaster assistance programs. English River Watershed stakeholders identified in Phase 1 Comprehensive Planning that reducing flood severity is a priority for watershed improvement. A brief analysis of flooding hazards is included in this plan as supplemental information and support for county Hazard Mitigation Plans. The [Poweshiek County Multi-Jurisdictional Hazard Mitigation Plan](#) was adopted in 2016 and expires in 2021.

## EXTENT OF HAZARDS

As determined by the Federal Emergency Management Agency (FEMA), Figure 14 shown below represents the flood hazards that exist in the Town of Tilton subwatershed. The flood hazard area accounts for roughly 6.4 percent of the subwatershed area. Riverine flooding can cause damage to crops, roads, homes, and businesses when river levels rise and overflow their banks. Urban areas, although none exist in the subwatershed, are also subject to impacts from flash flooding, or flooding that develops within 6 hours of the immediate storm.

Tables 12 and 13 show previous flooding events in the county from 2008 to present (August 2018) and public assistance costs per flood event. Not all assistance costs were incurred directly within the subwatershed because data is only available on the county level. The subwatershed covers about 2.9 percent of Poweshiek County's area. By contrast, the English River Watershed overlaps about 45 percent of Poweshiek County. Figures presented are not exhaustive; many flash flood events do not meet the threshold to trigger public assistance.

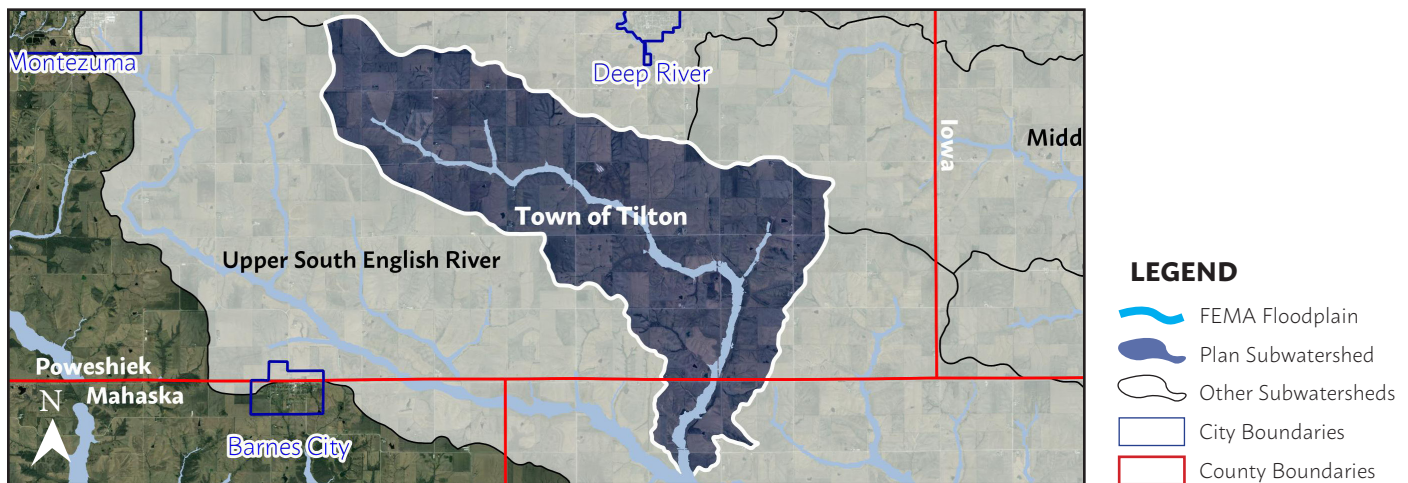


Figure 14. Flood hazard boundary areas for Town of Tilton Subwatershed. *Source: FEMA*

Table 12. 10-Year Disaster Assistance Funding by Type of Work in Poweshiek County. *Source: HSEM*

| Type of Work         | Assistance Costs    |
|----------------------|---------------------|
| Roads/Culverts       | \$623,826.13        |
| Debris Removal       | \$133,878.41        |
| Emergency Procedures | \$40,166.52         |
| <b>Total</b>         | <b>\$797,171.06</b> |

Table 13. 10-Year Disaster Assistance Funding by Flood Event in Poweshiek County. *Source: Iowa Homeland Security & Emergency Management (HSEM)*

| Flood Event Period       | Assistance Cost     | Flood Height at Deep River Monitoring Gauge |
|--------------------------|---------------------|---|
| May 25 - August 13, 2008 | \$249,331.52        | No historic data available                  |
| May 19 - June 1, 2013    | \$352,811.41        | 81.53' (6 <sup>th</sup> Highest)            |
| June 26 - July 8, 2014   | \$195,728.13        | 81.94' (7 <sup>th</sup> Highest)            |
| <b>Total</b>             | <b>\$797,171.06</b> |   |

## POTENTIAL LOSSES

Hazards United States (HAZUS) is a nationally-applicable, standardized method for estimating potential losses from floods and other hazards. Table 14 provides estimations of building and content damage from flooding events in ERW counties. There exists 1 structure vulnerable to losses from the 1 percent annual chance flood (red dots) and 4 structures vulnerable to the 0.2 percent annual chance flood (green dots) in the subwatershed (Figure 15).

Table 14. Estimated Losses from Flood Hazards by County in the ERW. Source: HSEM

| County  | Building Count | Estimated Building Cost | Estimated Content Cost | Estimated Building Damage | Estimated Content Damage | Combined Estimated Loss |
|---|----------------|-------------------------|------------------------|---------------------------|--------------------------|-------------------------|
| <b>Average Annual Loss Vulnerability</b>                      |                |                         |                        |                           |                          |                         |
| Iowa  | 20             | \$1,374,100.00          | \$1,000,000.00         | \$2,921.00                | \$1,379.00               | \$4,300.00              |
| Poweshiek   | 5              | \$407,220.00            | \$203,610.00           | \$5,274.00                | \$2,563.00               | \$7,837.00              |
| Keokuk  | 2              | \$11,620.00             | \$5,810.00             | \$484.00                  | \$268.00                 | \$752.00                |
| <b>100-Year Loss Vulnerability (1% Annual Chance Flood)</b>   |                |                         |                        |                           |                          |                         |
| Iowa  | 10             | \$1,002,150.00          | \$814,025.00           | \$82,248.00               | \$35,149.00              | \$117,397.00            |
| Poweshiek   | 4              | \$372,360.00            | \$186,180.00           | \$60,882.00               | \$34,394.00              | \$95,276.00             |
| Keokuk  | 2              | \$11,620.00             | \$5,810.00             | \$5,653.00                | \$3,117.00               | \$8,770.00              |
| <b>500-Year Loss Vulnerability (0.2% Annual Chance Flood)</b> |                |                         |                        |                           |                          |                         |
| Iowa  | 20             | \$1,374,100.00          | \$1,000,000.00         | \$183,065.00              | \$100,204.00             | \$283,269.00            |
| Poweshiek   | 5              | \$407,220.00            | \$203,610.00           | \$83,011.00               | \$50,406.00              | \$133,417.00            |
| Keokuk  | 2              | \$11,620.00             | \$5,810.00             | \$5,997.00                | \$3,289.00               | \$9,286.00              |

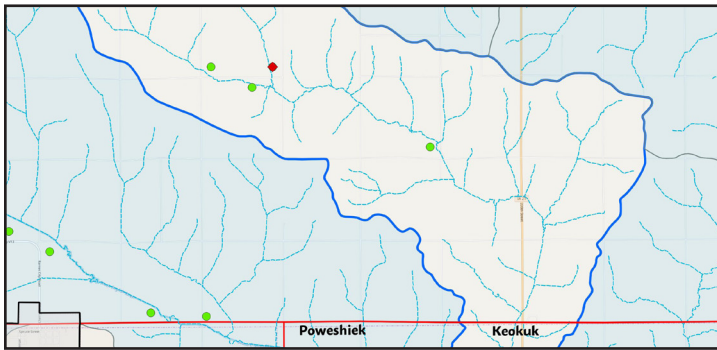


Figure 15. Vulnerable structures for flood hazards in the Town of Tilton Subwatershed. Source: HSEM

### VIEW INTERACTIVE HAZUS DATA:

<http://www.englishriverwma.org/subwatershed-plans/hazus>

The National Flood Insurance Program (NFIP) is a federal program that provides flood insurance for residential and commercial landowners in participating communities and counties (Table 15).

### VIEW POWESHIEK NFIP FLOOD MAP:

<http://arcg.is/1bDHWT>

Table 15. City or County Participation in NFIP. Source: FEMA

| Municipality/Entity     | Participation in NFIP |
|-------------------------|-----------------------|
| Grinnell                | Yes                   |
| Guernsey                | Yes                   |
| Montezuma               | Yes                   |
| Webster                 | Yes                   |
| Kinross                 | Yes                   |
| Johnson County          | Yes                   |
| Keokuk County           | Yes                   |
| Iowa County             | Yes                   |
| <b>Poweshiek County</b> | <b>Yes</b>            |
| Barnes City             | No                    |
| Deep River              | No                    |
| Gibson                  | No                    |
| Keswick                 | No                    |
| Millersburg             | No                    |
| Parnell                 | No                    |
| North English           | No                    |



## SOCIAL VULNERABILITY

Community disaster resilience is the ability of people living in a subwatershed to plan and act collectively, using local capacities to mitigate, prepare for, respond to, and recover from hazards like flooding. Understanding the social barriers present in a subwatershed may aid in targeting specific actions that watershed residents can utilize when preparing for or responding to a flood event.

The Iowa Flood Center Resilience Program conducted social vulnerability research as part of the Iowa Watershed Approach in 2018. The social vulnerability (SVI) is a combined metric of 12 indicators: African American, language barrier, renters, unemployed, poverty, children, elderly, Hispanic or Latino, low education, female head of household, disabled, and no vehicle access. They represent a percent of the population at the census tract level.

SVI scores are ranked on a scale of low/low-medium (0.000 - 0.300), medium (0.301 - 0.450), and medium-high/high (0.451-max). Table 16 displays the SVI and the top vulnerability indicators for each of the census tracts that overlap the ERW. The highlighted row(s) represent a census tract(s) that overlaps the subwatershed.

Table 16. Top Vulnerability Factors in English River Watershed by Census Tract. Source: IFC, ACS 2016 5-Year Estimates

| Census Tract | County           | Incorporated Cities                    | SVI          | 1 <sup>st</sup> Indicator            | 2 <sup>nd</sup> Indicator | 3 <sup>rd</sup> Indicator       |
|--------------|------------------|--|--------------|--------------------------------------|---------------------------|---------------------------------|
| 3704         | Poweshiek        | Grinnell                               | 0.725        | 2 % Black or African American        | 24 % Age 65 or Older      | 7 % Unemployed                  |
| 9601         | Washington       | Kalona, Riverside                      | 0.449        | 27 % Children                        | 4 % Limited English       | 13 % No High School Diploma     |
| <b>3705</b>  | <b>Poweshiek</b> | <b>Montezuma, Guernsey, Deep River</b> | <b>0.44</b>  | <b>1 % Black or African American</b> | <b>12 % Poverty</b>       | <b>5 % Unemployed</b>           |
| 9501         | Mahaska          | Barnes City                            | 0.418        | 2 % Black or African American        | 7 % Unemployed            | 27 % Children                   |
| 9602         | Washington       | Wellman                                | 0.411        | 1 % Black or African American        | 23 % Children             | 3 % Hispanic or Latino          |
| <b>802</b>   | <b>Keokuk</b>    | <b>Gibson, Keswick, Webster</b>        | <b>0.404</b> | <b>7 % Unemployed</b>                | <b>15 % Poverty</b>       | <b>25 % Children</b>            |
| 9603         | Iowa             | North English, Millersburg             | 0.401        | 27 % Children                        | 11 % Poverty              | 0.5 % Black or African American |
| 104          | Johnson          | None                                   | 0.381        | 2 % Black or African American        | 5 % Limited English       | 12 % No Vehicle Access          |
| 801          | Keokuk           | Kinross                                | 0.375        | 27 % Children                        | 13 % Poverty              | 4 % Unemployed                  |
| 3702         | Poweshiek        | Grinnell                               | 0.363        | 5 % Unemployed                       | 20 % Age 65 or Older      | 3 % Hispanic or Latino          |
| 3701         | Poweshiek        | None                                   | 0.339        | 5% Age 65 or Older                   | 5% Unemployed             | 5 % Black or African American   |
| 9604         | Iowa             | Parnell                                | 0.326        | 0.5 % Black or African American      | 10 % Poverty              | 19 % Age 65 or Older            |

Social vulnerability maps are available to the public online via the Iowa Flood Center’s Iowa Watershed Approach mapping application. Click the link below and then select your watershed of interest. Then, hover over the “IWA” icon within the menu on the top-right side of the page. From there, you will see a “Flood Resilience” heading and a button to turn on the social vulnerability map layer. Users can click around on the various census tracts within the English River Watershed to see more information regarding the social vulnerability, including the top three indicators of vulnerability for that particular census tract in comparison to the rest of the watershed.

**VIEW FLOOD RESILIENCY MAP:**  
<http://iwa.iowawis.org/app/>

**VIEW SOCIAL VULNERABILITY MAPS:**  
<http://www.englishriverwma.org/subwatershed-plans/resilience>

# SECTION 7: ACTION PLAN

This plan is intended to serve as a guide in decision-making and planning by the ERW, local agencies, local government, and citizens. Mitigation actions stated in this section are the result of data obtained through the Phase 2 planning process, the 2018 Conservation Survey, and other stakeholder input. The priority mitigation actions should be re-evaluated at least every 5 years and adjusted as necessary to keep pace with accomplished projects, current policies and practice, and availability of funding.

Mitigation actions presented in this plan (Table 17) supplement recommendations stated in Iowa County’s Hazard Mitigation Plan. The following recommendations for the Town of Tilton subwatershed are based on a comparative analysis among all 14 subwatershed analyzed in this planning project.

There are not any incorporated areas in the subwatershed but the SVI does rank high among all subwatersheds. The primary indicators of vulnerability are high poverty and unemployment rates. Flood hazards in the subwatershed are low, however, with only a few structures at risk and overall a small floodplain area. The primary resource concern in the subwatershed is soil erosion, ranking in the middle for average annual soil erosion, soil detachment during spring 2013 flooding, and soil delivery. Soil erosion can be combated through a variety of in-field and edge-of-field BMPs like contour buffer strips and bioreactors. These practices present strong potential in the subwatershed based on the ACPF model presented in Section 5. Practices should be implemented along ACPF guidelines and in areas that are identified as highly prone to soil erosion, which can be found using the SCS-CN results presented in Section 4.

## FUNDING SOURCES

Mitigation actions can be financially supported through a variety of state and federal programs (Table 17). Examples of BMPs that can be funded by each program are shown in Table 18. More information on each program can be found on by accessing the links shown for each program. The following table is not exhaustive.

Table 17. State and Federal Conservation Programs. *Source: ERW*

| Program   | Eligible Applicants  | Funding                                       | Notes  |
|---|--|---|--|
| Hazard Mitigation Grant Program (HMGP)<br><a href="https://bit.ly/2wiKqQ7">https://bit.ly/2wiKqQ7</a> | Individuals, state agencies, tribal agencies, private non-profits, municipalities, counties                    | Grants vary                                   | <ul style="list-style-type: none"> <li>Requires project to be directly attributable to action stated in local Hazard Mitigation Plan</li> <li>Non-profits must partner with municipality or county</li> </ul>                            |
| Pre-Disaster Mitigation Program (PDM)<br><a href="https://bit.ly/2wiKqQ7">https://bit.ly/2wiKqQ7</a>  | State agencies, U.S. territories, tribal agencies, municipalities, counties                                    | Grants vary                                   | <ul style="list-style-type: none"> <li>Requires project to be directly attributable to action stated in local Hazard Mitigation Plan</li> <li>Funded annually by Congressional action and subject to a national competition</li> </ul>   |
| Iowa Watershed Approach (IWA)<br><a href="https://bit.ly/2P7ibSi">https://bit.ly/2P7ibSi</a>          | Individuals, municipalities, counties, private non-profits   | 75% cost share, no max as funds are available | <ul style="list-style-type: none"> <li>Project must be within eligible area defined by HUD</li> <li>Funding period closes December 2022</li> </ul>   |
| Water Quality Initiative (WQI)<br><a href="https://bit.ly/2BSCjWG">https://bit.ly/2BSCjWG</a>         | SWCDs, counties, county conservation boards, municipalities, private non-profits, public water utilities, WMAs | Grants vary; Typical range: \$100-\$300K      | <ul style="list-style-type: none"> <li>Established in 2013 to help implement Nutrient Reduction Strategy</li> <li>Funding is steered toward priority watershed projects across the state</li> </ul>                                      |
| EPA 319 Non-Point Source Program<br><a href="https://bit.ly/2BTXTtS">https://bit.ly/2BTXTtS</a>       | WMAs, SWCDs  | Grants vary; Typical range: \$100-\$300K      | <ul style="list-style-type: none"> <li>Funding includes technical assistance, financial assistance, demonstration projects, training</li> <li>Funding decisions are made by states; states receive annual allocation from EPA</li> </ul> |



Table 18. Mitigation Action Plan for the Town of Tilton subwatershed. Source: ERW

| Plan Objective | Action Number | Mitigation Action   | Recommended Practices   | Recommended Sites for Implementation                | Timeframe | Potential Funding Source | Potential Partners                           | Jurisdiction Benefitting from Action | Action Priority |
|----------------|---------------|---|---|---|-----------|--------------------------|--|--------------------------------------|-----------------|
| 1              | 1.1           | Flood protection of critical facilities along unnamed creek                     | None  | None  | N/A       | N/A                      | N/A  | N/A                                  | None            |
|                | 1.2           | Flood protection of bridges in Town of Tilton subwatershed                      | Perennial Cover, Floodplain Restoration                             | See HAZUS Analysis (Section 7)                      | 5-7 Years | HMGF, PDM                | Secondary Roads, Poweshiek/Keokuk SWCD, NRCS | Poweshiek/Keokuk Counties            | Medium/High     |
|                | 1.3           | Flood protection for population safety in Town of Tilton subwatershed           | Detention Basins, Ponds   | See Urban Analysis (Section 6)                      | 1-3 Years | PDM                      | ERW  | N/A                                  | Low             |
| 2              | 2.2           | Acquire property at risk of flooding near Town of Tilton; convert to open space | None  | None  | N/A       | N/A                      | N/A  | N/A                                  | N/A             |
|                | 2.3           | Elevation of structures at risk to flooding in incorporated areas               | None  | N/A   | N/A       | N/A                      | N/A  | N/A                                  | N/A             |
|                | 3.1           | Improve water quality in urban areas in Town of Tilton subwatershed             | Perennial Cover, Grass, Stormwater Detention Basin, Urban BMPs      | See Urban Analysis (Section 6)                      | 5-7 Years | WQI                      | Poweshiek/Keokuk SWCD, NRCS, ERW             | N/A                                  | Medium/High     |
| 3              | 3.2           | Improve water quality in rural areas in Town of Tilton subwatershed             | Saturated Buffers, Bioreactors, Wetlands, Sediment Detention Basins | See Soil Erosion and ACPF Analysis (Sections 4 & 5) | 1-3 Years | 319                      | Poweshiek/Keokuk SWCD, NRCS, ERW             | Poweshiek/Keokuk Counties            | High            |
|                | 4.1           | Provide flood protection for roads and in Town of Tilton subwatershed           | Floodplain Restoration, Perennial Cover                             | See HAZUS Analysis (Section 7)                      | 5-7 Years | HMGF, PDM                | Secondary Roads, Poweshiek/Keokuk SWCD, NRCS | Poweshiek/Keokuk Counties            | Low             |

# ACRONYMS

|             |   |               |  |
|-------------|---|---------------|--|
| <b>ACPF</b> | Agriculture Conservation Planning Framework | <b>ISWMM</b>  | Iowa Stormwater Management Manual        |
| <b>BMP</b>  | Best Management Practice                    | <b>IWA</b>    | Iowa Watershed Approach                  |
| <b>DEP</b>  | Daily Erosion Project                       | <b>NFIP</b>   | National Flood Insurance Program         |
| <b>EPA</b>  | Environmental Protection Agency             | <b>NRCS</b>   | Natural Resource Conservation Service    |
| <b>ERW</b>  | English River Watershed                     | <b>NRS</b>    | Nutrient Reduction Strategy              |
| <b>FEMA</b> | Federal Emergency Management Agency         | <b>SCS-CN</b> | Soil Conservation Service - Curve Number |
| <b>HSEM</b> | Homeland Security & Emergency Management    | <b>SWCD</b>   | Soil & Water Conservation District       |
| <b>HUC</b>  | Hydrologic Unit Code                        | <b>WMA</b>    | Watershed Management Authority           |

# ACKNOWLEDGEMENTS

This report is one of fourteen subwatershed plans developed as part of Phase 2 planning in the English River Watershed. These plans would not have been possible without the hardwork by the Iowa Flood Center and their participation in the National Disaster Resiliency program, a federal grant administered by the Housing and Urban Development department. The following is a list of project partners that were instrumental in providing data, technical assistance, and support through the planning process.



The Iowa Flood Center



Iowa County, Iowa



The University of Northern Iowa's GeoTREE Center



The Iowa Department of Natural Resources



Iowa Homeland Security & Emergency Management



The Iowa Water Center & The Daily Erosion Project



Center for Evaluation and Assessment



The State Hygienic Laboratory



Iowa Department of Agriculture & Land Stewardship



Eldon C. Stutsman, Inc.

# CONTACT INFORMATION

All of the data, assessments, and tools highlighted in this plan are available to the public. Please contact staff at the English River Watershed to discuss how we can assist you in conservation planning and implementation.

The English River Watershed organization operates out of the Kalona City Hall offices. Our team is available by email, phone, or via our website: (<http://englishriverwma.org/contact>).

Jody Bailey, Watershed Coordinator  
[jbailey@englishriverwma.org](mailto:jbailey@englishriverwma.org)  
 (319) 656-2310  
 511 C Avenue, Kalona IA, 52247