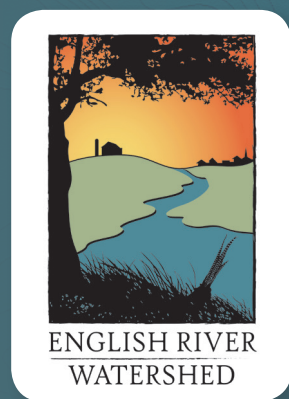


2018



SUBWATERSHED TOOLKITS

MIDDLE NORTH ENGLISH RIVER

HUC-12: 070802090406



TABLE OF CONTENTS

Section 1: Planning Process.....	Page 3
Section 2: 2018 Conservation Survey	Page 5
Section 3: Water Quality Monitoring	Page 7
Section 4: Soil Erosion	Page 9
Section 5: Agricultural Conservation Planning Framework	Page 12
Section 6: Hazard Mitigation	Page 14
Section 7: Action Plan	Page 17
Acronyms, Acknowledgements, & Contact Information	Page 19



Funding for development and printing of this plan was provided by the [Iowa Watershed Approach](#).

The Iowa Watershed Approach is a collaborative program that brings together local, state, federal, and private organizations to work together to address factors that contribute to floods and nutrient flows. Iowans will enjoy improvements in quality of life and health resulting from upstream watershed investments tied to community resilience activities. This adaptive model, supported by U.S. Housing and Urban Development (HUD) dollars, will leverage the principles of Iowa’s innovative Nutrient Reduction Strategy to make our communities more resilient to flooding and help improve water quality.

SECTION 1: PLANNING PROCESS

The English River Watershed (ERW) completed “Phase 1” comprehensive watershed planning in 2015. The goal of this project was to take an inventory of the physical environment, complete hydrologic modeling on the basin scale (HUC-8), collect baseline water quality data, engage landowners in the planning process, and formulate watershed improvement recommendations based on data public input. The entire plan, titled the *English River Watershed Improvement and Resiliency Plan*, can be found on the English River Watershed website.

PHASE 2 KEY QUESTIONS & OUTCOMES

Beginning in Fall 2017, the English River Watershed began the “Phase 2” subwatershed planning process, which was completed in December of 2018. The goal of this phase was to discover priority areas on the subwatershed level (HUC-12) for targeted implementation of cost-share funds. The plans are intended to introduce many of the tools and analyses that can be used by municipalities, SWCDs, the WMA, and other organizations when considering watershed improvement projects.

The ERW consists of 20 HUC-12 subwatersheds. Due to limitations on where funding could be spent for this project, if the majority of the subwatershed’s area overlapped Washington County it was not included and a Phase 2 plan was not created. Thus, 14 total subwatershed plans were developed. Table 1 shown below highlights the differences between the 9-step planning process in Phases 1 and 2.

Table 1. The 9-Step Planning Process for Phase 1 and Phase 2. *Source: ERW*

Planning Step	Phase 1 Outcomes	Phase 2 Key Questions	Phase 2 Outcomes
1. Engage the Public	Determined of the community’s concerns and perceived threats to water quality and quantity.	What concerns are specific to the HUC-12 subwatershed?	Completed a mail survey to all 14 subwatersheds and gained input at various meetings and events.
2. Inventory Resources	Determined the broad land uses, environmental characteristics, and history of the watershed.	What data exists on the subwatershed level and can be analyzed in comparison between subwatersheds?	Compiled data on soil erosion, flooding and social risks, water quality, and detailed urban land uses.
3. Develop Problem Statements	Determined the broad causes and sources of impairments in the watershed.	What tools can be developed to provide support for watershed entities seeking grant or cost share funding?	Designed a “toolbox” of resources for watershed entities that address problems specific to each subwatershed.
4. Identify Target Conditions	Identified recommendations for HUC-8 scale watershed improvements to water quality and quantity.	What are the HUC-12 level specific water quality and quantity conditions?	Analyzed historical erosion data, developed erosion potential maps, and completed 2 seasons of water quality monitoring.
5. Develop Restoration Targets	Determined priority issues throughout the watershed through public participation.	What is the potential for conservation practices (amount or type)?	Completed the Agricultural Conservation Planning Framework (ACPF) and urban modeling.
6. Evaluate Alternatives	Prepared BMP benefits table with associated reductions in contaminants or flood volumes.	What do the recommended practices achieve?	Matrix for cost/benefits of urban/ rural practices and risk analysis based on community assets.
7. Prepare the Implementation Plan	Assigned responsibility to the WMA for continued research and pursuit of cost share funding.	Who is responsible for implementing programs? Who can provide technical assistance?	Matrix for responsible parties, funding opportunities, and resources provided by ERW.
8. Implement the Plan	Physical and digital copies of the plan were delivered to watershed entities.	How will the results and recommendations of the plan be communicated to the public?	Physical and digital copies of the plan delivered to watershed entities and interactive webmaps.
9. Evaluate the Plan	Determined a routine for updating the plan and monitoring implementation goals.	How will practices be measured and who will update the plan?	Developed a monitoring plan, including metrics for success.

ABOUT THE SUBWATERSHED

The Middle North English River subwatershed is located in the central region of the ERW. It overlaps Iowa County and does not overlap any incorporated cities in the ERW. Figure 1 is a location map of the subwatershed. The subwatershed encompasses 12,841 acres (20.1 square miles) of land, which is predominately row crops (corn and soybeans). The Middle North English River stretches approximately 9.03 miles through the subwatershed in west to east direction, eventually outletting into the English River.

It was determined in Phase 1 planning that nutrient concentrations in the subwatershed for nitrates and phosphorus were average in comparison the entire ERW. Furthermore, water quality testing in 2018 also uncovered very high concentrations of E.Coli bacteria. Watershed stakeholders also expressed their desire for routine water quality monitoring in all subwatersheds.

Resource concerns within and upstream of the the Middle North English River subwatershed aided in the ERW's decision to designate the subwatershed as one of five priority areas for implementation of best management practices (BMPs) through cost share partnerships with local landowners. Funding for this program is available through the Iowa Watershed Approach (IWA).

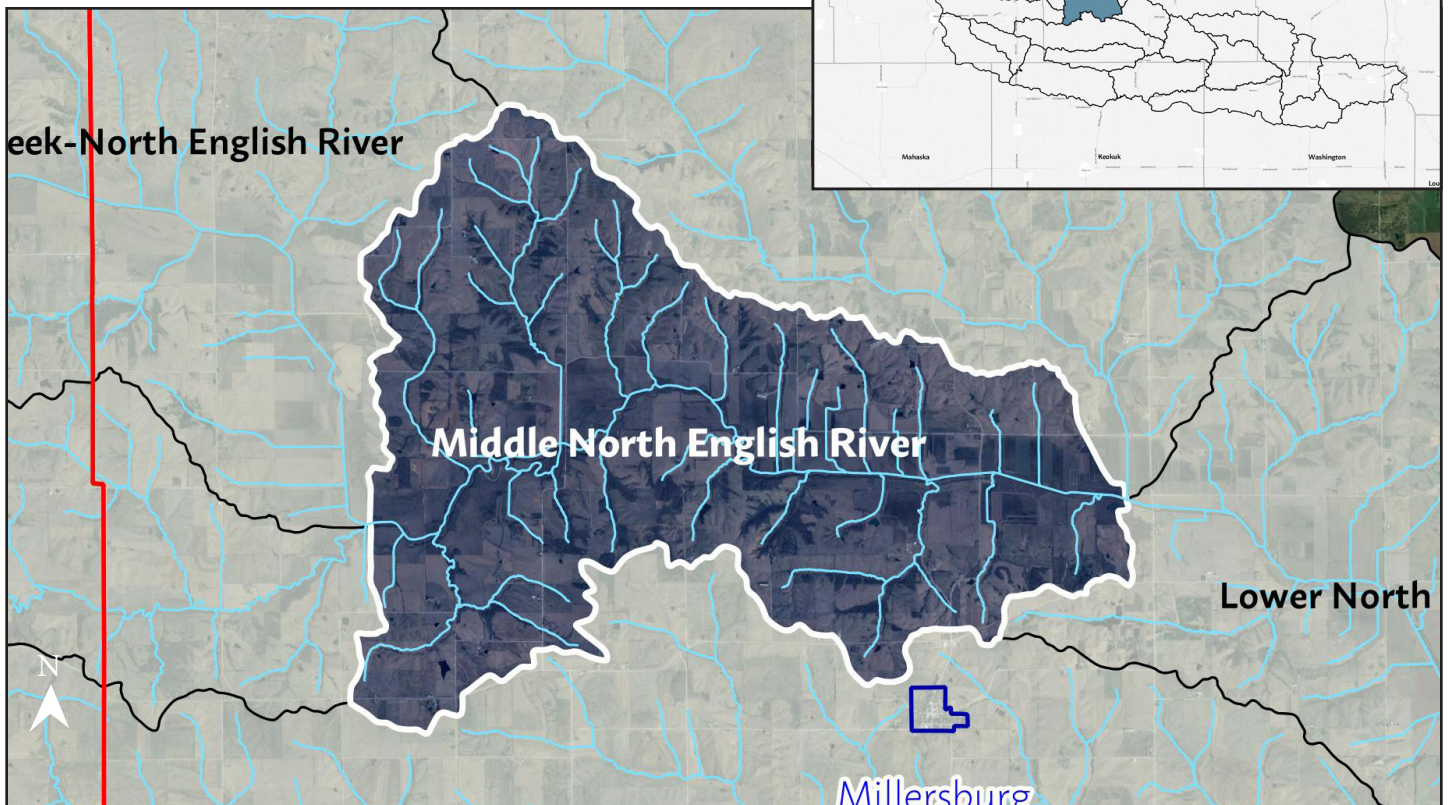
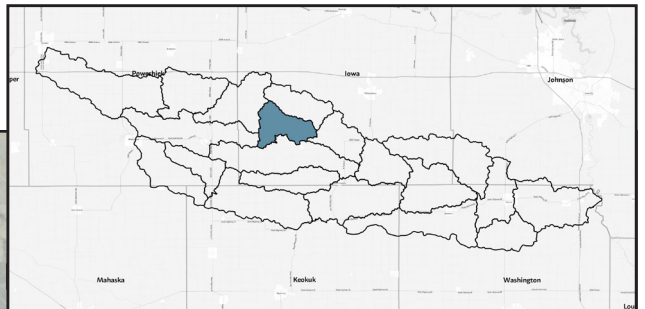


Figure 1. Middle North English River Subwatershed Boundary Map. Source: ERW

SECTION 2: 2018 CONSERVATION SURVEY

The English River Watershed completed the “2018 Conservation Survey” in the spring of 2018. The survey builds upon the landowner survey completed in Phase 1 and seeks to better understand the barriers farmers face when considering adoption of conservation practices.

A random sample of agricultural properties of at least 10 acres in size in the watershed were sampled via mail. The sample totaled 986 properties in Iowa, Poweshiek, Johnson, and Keokuk Counties. 264 surveys were completed, which is a response rate of 26.8 percent.

Among the entire sample, the majority of respondents indentified in the age group of 55 - 64 years old (27.7%). Table 2 shows the breakdown of farm size in the survey. Table 3 shows the breakdown of type of farm operations in the survey.

CONSERVATION ADOPTION AND WILLINGNESS

The survey first sought to understand which conservation practices are currently being implemented and which practices, dependent on availability of cost-share funding, are in demand. This information allows conservation organizations to provide more relevant information to landowners. Figure 2 shows the number of respondents that have tried a specific practice (green bars) and the number of respondents who would try specific practices with the availability of 75 percent cost-share (blue bars).

Table 2. Farm size in survey sample. Source: ERW

Farm Size	% of Respondents
Less than 25 acres	7%
25 - 75 acres	14%
75 - 250 acres	32%
250 - 500 acres	21%
500 - 1,000 acres	13%
More than 1,000 acre	13%

Table 3. Type of farm operation in survey sample. Source: ERW

Crops/Livestock	Number of Respondents / % of Sample
Corn	211 / (35.2%)
Soybeans	210 / (35.1%)
Hogs	30 / (5.0%)
Beef Cattle	68 / (11.4%)
Dairy Cattle	11 / (1.8%)
Other	69 / (11.5%)

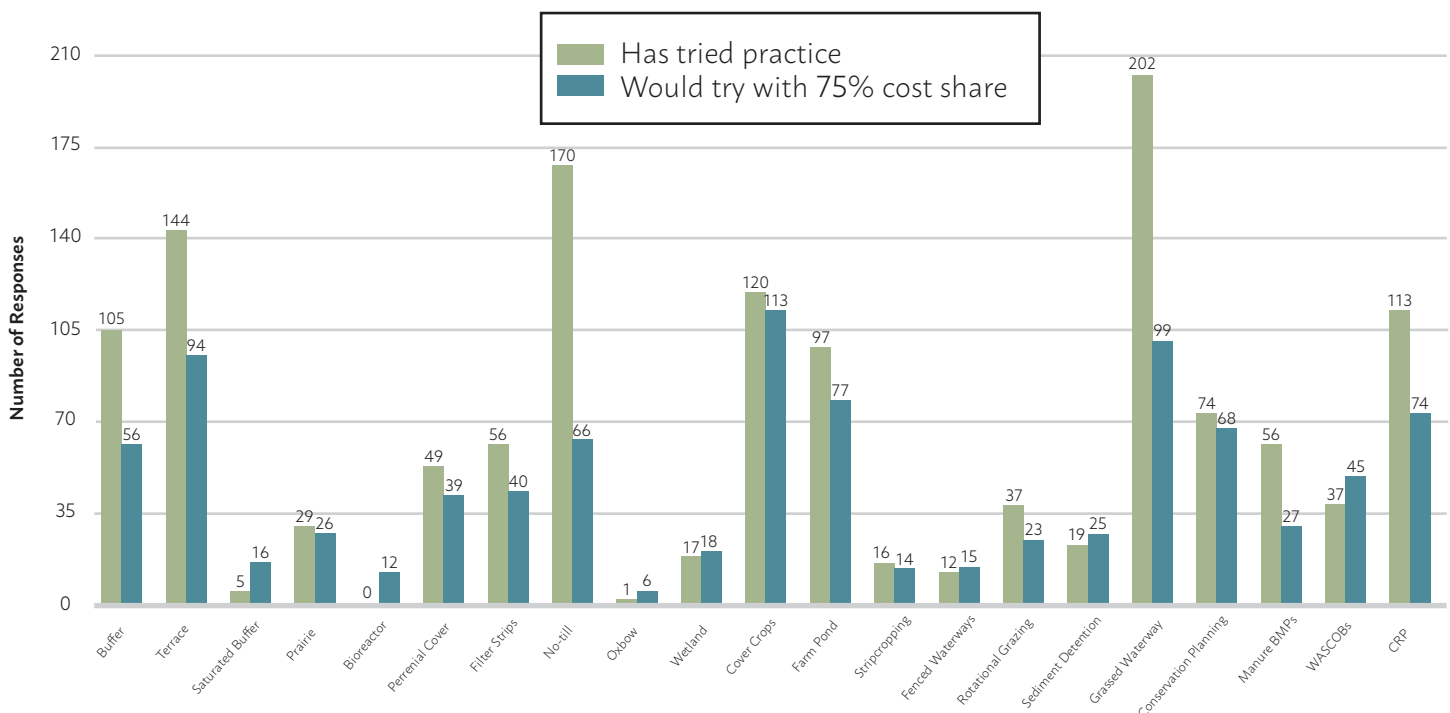


Figure 2. Conservation adoption and willingness to adopt conservation practices with cost share among survey sample. Source: ERW

CONSERVATION ORGANIZATIONS

Farmers face a plethora of options when seeking information about conservation. This situation can lead to confusion among various conservation organizations and produce conflicting information. Table 4 shows survey respondent's familiarity with the purpose of each group and how respondents are interacting with various groups in Iowa.

Table 4. Familiarity with organizational purposes and groups distributing conservation information among survey sample. *Source: ERW*

Organization	Mean Familiarity with Mission or Purpose (5 = Very Familiar)	Distribution of Conservation Information (Total # of Responses)
Natural Resource Conservation Service	3.21	140
Iowa Department of Natural Resources	3.16	67
County Conservation	2.99	71
Iowa State University Extension and Outreach	2.81	83
Iowa Department of Agriculture and Land Stewardship	2.70	57
Soil and Water Conservation District	2.67	84
English River Watershed	2.40	61
Iowa Flood Center	1.49	N/A
Crop Advisor	N/A	22
Growers or Producers Associations	N/A	33
Fertilizer or Agricultural Products Dealer	N/A	35

BARRIERS TO CONSERVATION

Finally, the survey attempted to uncover barriers to conservation according to farmers in the watershed. Figure 5 displays the respondent's level of agreement with various statements related to conservation and Table 5 shows some of the barriers that exist for farmers considering adopting conservation practices. Data specific to Iowa and Keokuk Counties can be found in the full report at the link below.



Figure 5. Mean level of agreement among conservation statements. *Source: ERW*

Table 5. Top barriers to conservation identified by survey sample. *Source: ERW*

Rank	Barrier	# of Responses
1	Cost of practice	142
2	Too many "strings attached" with state/federal programs	116
3	Loss of productive land / impact on yields	74
4	Uncertainty of crop values year to year	52
5	Maintenance plans are too strict or confusing	38
6	Unsure of actual environmental benefits	28
7	Other	14

VIEW ENTIRE "2018 CONSERVATION SURVEY" REPORT:
<http://www.englishriverwma.org/subwatershed-plans/survey>

SECTION 3: WATER QUALITY MONITORING

Stakeholders in the ERW identified continued water quality monitoring as the organization's number one priority during the Phase 1 comprehensive planning process. Long-term water quality monitoring is essential in the establishment of reliable water quality baselines and changes over time and in assessing the effectiveness of targeted implementation projects.

Sampling Site 14 is near the outlet of the Middle North English subwatershed. It is located on the H Avenue bridge, just north of the city of Millersburg, in Iowa County (Figure 4).

Water quality snapshots, 5 samples in total, were conducted in 2014 during Phase 1 planning. Samples were collected and analyzed by the Iowa Soybean Association. Samples taken in 2017 and 2018 were collected by ERW staff and analyzed at the State Hygienic Laboratory. Both the 2017 and 2018 monitoring season were funded through the Iowa Watershed Approach.

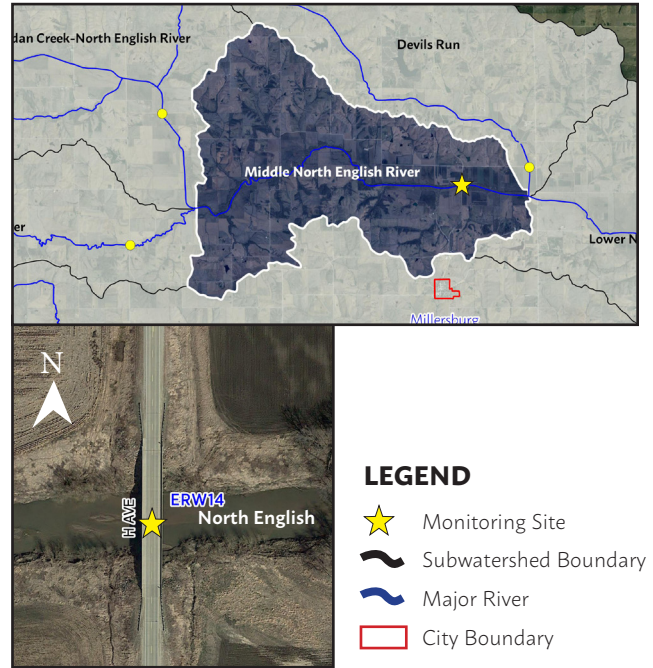


Figure 4. Water quality monitoring location for the Middle North English River subwatershed. Source: ERW

MONITORING RESULTS

Tables 6, 7, 8, and 9 shown on the following page display monthly concentration minimums, maximums, and averages for E.Coli, orthophosphate, total phosphorus, and nitrate and nitrite, respectively, at the Deep River sampling location. An overabundance of these contaminants in the watershed is a resource concern because of their ability to negatively impact plants, wildlife, and human health through poor water quality. Values in red exceed standards for freshwater streams as defined by the Environmental Protection Agency (EPA). A more detailed explanation on standards for each of the contaminants can be found on the English River Watershed website.

During the 2017 sampling season (June 7 – December 18), the site was sampled 14 times for Nitrate+Nitrite as N, 14 times for E. coli Bacteria, 13 times for ortho-Phosphate as P, and 14 times for Total Phosphorus as P. During the 2018 sampling season (March 23 – September 4), Site 14 was sampled 13 times for Nitrate+Nitrite as N, 13 times for E. coli Bacteria, 12 times for ortho-Phosphate as P, and 13 times for Total Phosphorus as P. 2017 sampling events occurred at regular intervals between June 7 – December 18. Sampling events in 2018 occurred at regular intervals between March 23 – September 17.

In 2017, Site 14 ranked 3rd of the English River's 20 subwatersheds for its seasonal average E. coli Bacteria values. In 2018, Site 14 also ranked 3rd. A value of 24,000+ means that the measurable value of E. Coli Bacteria exceeded the lab test's capacity of identifying up to 24,000 CFUs. Further dilution and testing would be required to determine an actual value higher than that. Values in red exceed the Iowa beach advisory/health standards of 235 CFUs/100mL.

In 2017, Site 14 ranked 5th of the English River's 20 subwatersheds for its seasonal average ortho-Phosphate as P values. In 2018, Site 14 ranked 4th.

In 2017, Site 14 ranked 12th of the English River's 20 subwatersheds for its seasonal average Total Phosphorus as P values. In 2018, Site 14 ranked 6th. Values in red exceed EPA standard of 0.075 mg/L for freshwater streams.

In 2017, Site 14 ranked 15th of the English River's 20 subwatersheds for its seasonal average Nitrate+Nitrite as N values. In 2018, Site 14 ranked 12th. Values in red exceed EPA drinking water standard of 10 mg/L.

Table 6. E.Coli ([CFUs]/100mL) monitoring results by monthly averages at ERW 14 (2017-2018). *Source: ERW*

Year	Min	Max	Average
2017	150	24,000+	2,685
2018	52	24,000+	4,568

Table 7. Ortho-Phosphate as P (mg/L) monitoring results by monthly averages at ERW 14 (2017-2018). *Source: ERW*

Year	Min	Max	Average
2017	0.00	0.10	0.05
2018	0.03	0.14	0.09

Table 8. Total Phosphorus as P (mg/L) monitoring results by monthly averages at ERW 14 (2017-2018). *Source: ERW*

Year	Min	Max	Average
2017	0.00	0.51	0.17
2018	0.11	1.60	0.32

Table 9. Nitrate + nitrite as N (mg/L) monitoring results by monthly averages at ERW 14 (2017-2018). *Source: ERW*

Year	Min	Max	Average
2017	0.0	9.4	2.3
2018	0.5	9.8	4.2

DATA AVAILABILITY

All water quality monitoring data collected during Phase 1 and Phase 2 is publicly available and accessible on the English River Watershed website. Watershed staff are able to create graphs and charts upon request that can be used to support grant applications or other funding opportunities. Figure 5 shown below is an example of how water quality monitoring results can be reproduced for the various contaminants tested shown above, including results from transparency field tests.

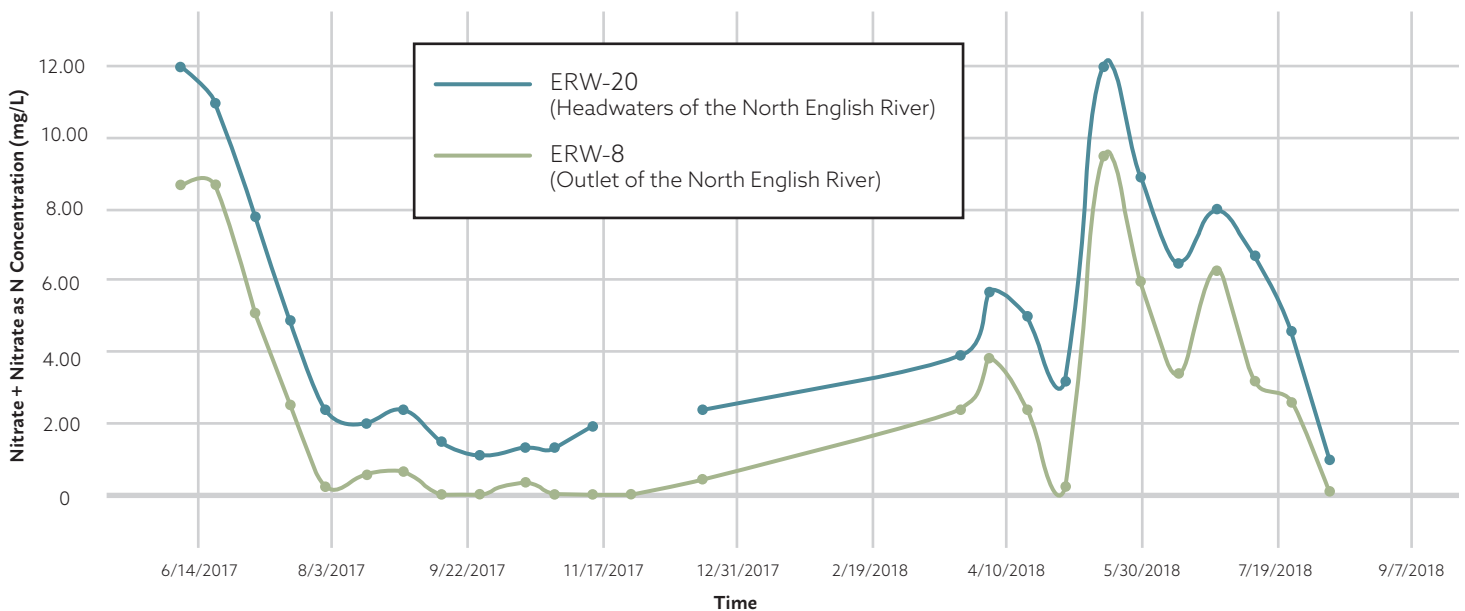


Figure 5. Example graph of Nitrate + Nitrite as N monitoring results for Sites 20 and 8 in the ERW. (2017-2018). *Source: ERW*

VIEW INTERACTIVE WATER QUALITY MONITORING MAP:
<http://www.englishriverwma.org/water-quality-monitoring-1>

SECTION 4: SOIL EROSION

The ERW *Resiliency and Improvement Plan* seeks to reduce soil loss from farm fields, urban areas, and construction sites through best management practices that promote soil retention and stability. In order to target specific areas of concern where practices would be most beneficial, a deeper understanding of soil erosion on the subwatershed level is necessary. Data presented in the following analysis was provided by the Iowa State University Daily Erosion Project (DEP), at <https://dailyerosion.org/map>. The illustration below shows what is modeled by the DEP in comparison to visible gulley erosion.

SOIL EROSION

One method for estimating erosion is to calculate the average amount of water that left the hillslopes by above ground transport. Figure 6 shown below portrays monthly variation in average erosion in the Middle North English River subwatershed. As indicated by the linear trendline, estimated erosion from 2008 to 2016 appears to be increasing. Flooding in April of 2013 generated over 12 times the total erosion (147.94 mm) than Middle River's average monthly erosion of 12.26 mm (0.48 inches).

Subwatersheds are identified by the last 3 digits of their 12-digit hydrologic unit code (HUC) in Table 10. For example, Middle North English River HUC is "070802090406"; see 406 Table 10 below.

Table 10. Estimated Average Monthly Soil Runoff and Average Monthly Precipitation (2008-2016). *Source: DEP*

	405	404	402	302	401	501	403	502	301	406	408	407	503	504
Average Monthly Soil Runoff (mm)	13.43	13.42	13.28	13.05	13.02	12.89	12.76	12.75	12.59	12.26	12.24	12.23	11.78	10.80
Average Monthly Precipitation (mm)	82.68	81.97	80.54	83.21	79.25	82.04	81.65	82.23	83.68	82.65	83.17	84.61	82.92	82.29

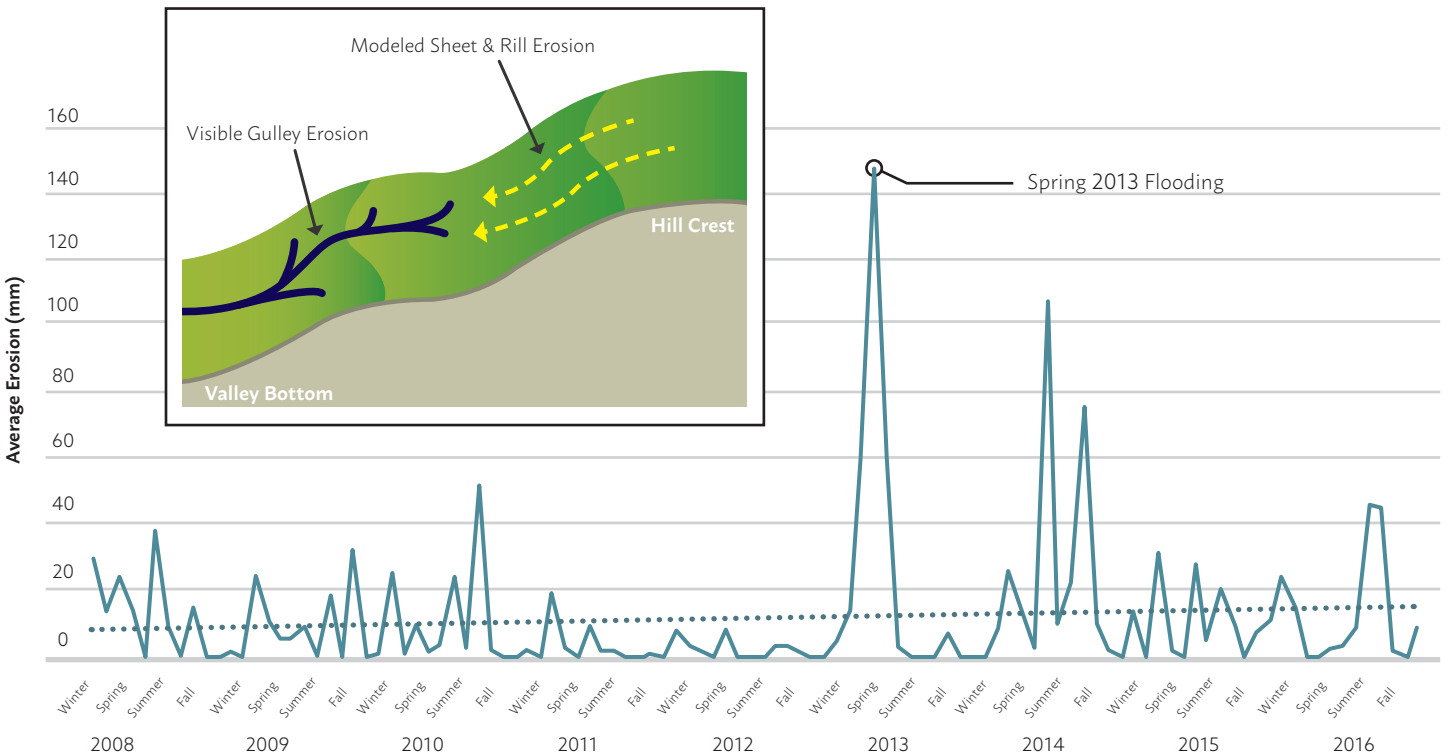


Figure 6. Soil Erosion in the Middle North English River Subwatershed (2008-2016). *Source: DEP*

SOIL DETACHMENT & DELIVERY

Detachment is the amount of soil that is disturbed on the hillslopes during various rain events. For this analysis, historic flooding in 2013 was utilized for comparison among subwatersheds regarding their ability to hold soil. The Middle North English River subwatershed experienced an average of 6.63 tons per acre of disturbed soil during the given flood period. By comparison, the average soil detachment among the 14 subwatersheds was 6.47 tons per acre. This data is shown below (Figure 7) as light green bars.

Soil delivery is the average amount of soil transported to the bottom of hillslopes. Blue bars in the bar graph shown below (Figure 7) display average soil delivery from 2008 to 2016. The Middle North English River subwatershed ranks near the middle of all subwatersheds for soil delivery at 7.83 tons per acre per year. It is estimated that erosion rates in Iowa are about 5.1 tons per acre per year (Mike Duffy, 2012). Based on this average, soil loss in Middle North English River is above the state average and above the average (7.00 tons per acre per year) of all subwatersheds in the English River Watershed.

All data presented in this section is publicly available via an interactive webmap hosted by the DEP. Visit the link below to access soil erosion data specifically for the Middle North English River subwatershed.

Source: Duffy, Mike. Value of Soil Erosion to the Land Owner, August 2012. <https://www.extension.iastate.edu/agdm/crops/pdf/a1-75.pdf>

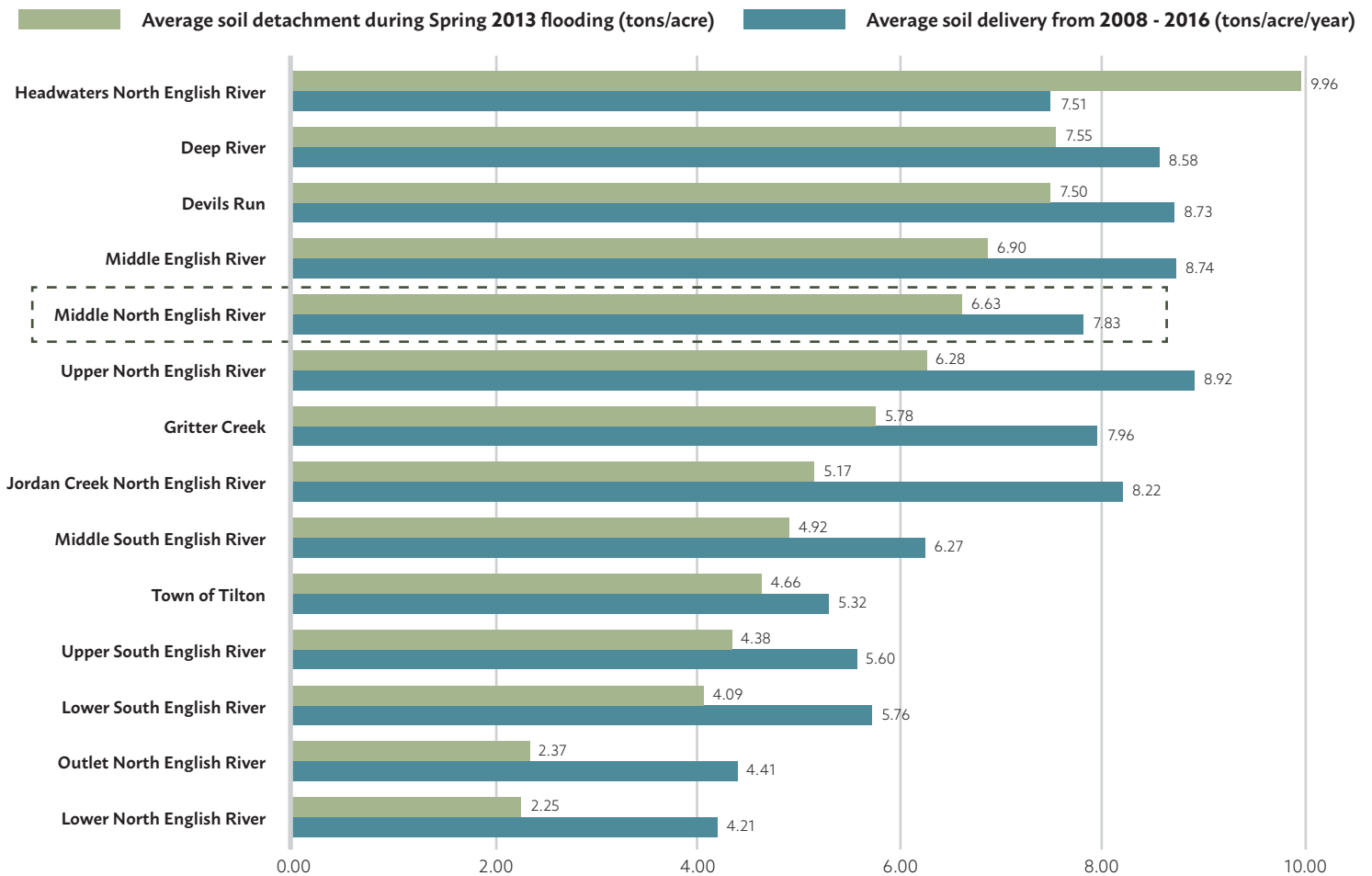


Figure 7. Soil Delivery and Detachment in the Middle North English River Subwatershed (2008-2016). Source: DEP

VIEW DAILY EROSION PROJECT FOR MIDDLE NORTH ENGLISH:
<https://bit.ly/2Qslqoh>

SHEET AND RILL EROSION & SEDIMENT DELIVERY POTENTIAL

Four priority subwatersheds (Gritter Creek, Middle English River, Headwaters North English, and the Middle North English River) were selected for implementation of BMPs through the IWA project through a cost-share program. As a result, these subwatersheds were subject to a greater level of research and planning including a detailed land use assessment completed in 2017 for use in the Revised Universal Soil Loss Equation, Version 2 (RUSLE2) analysis, which estimated sheet and rill erosion (Figure 8) and sediment delivery (Figure 9). The Iowa Department of Natural Resources (IDNR) estimates sheet and rill erosion in the subwatershed is 53,235 tons per year. The IDNR also estimates that 10,992 tons of sediment is delivered to waterways per year.

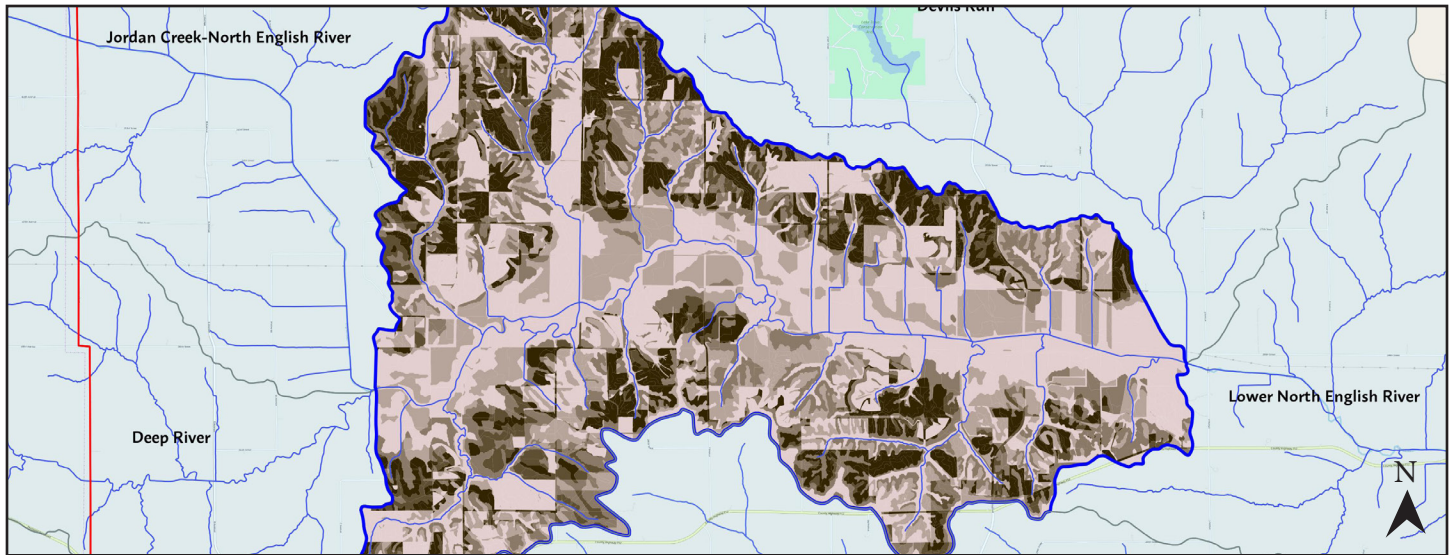


Figure 8. Estimated Sheet and Rill Erosion for the Middle North English River Subwatershed, 2017. Source: Iowa DNR

0-1 tons/acre/year 1-2 tons/acre/year 2-5 tons/acre/year 5-8 tons/acre/year 8-43.5 tons/acre/year

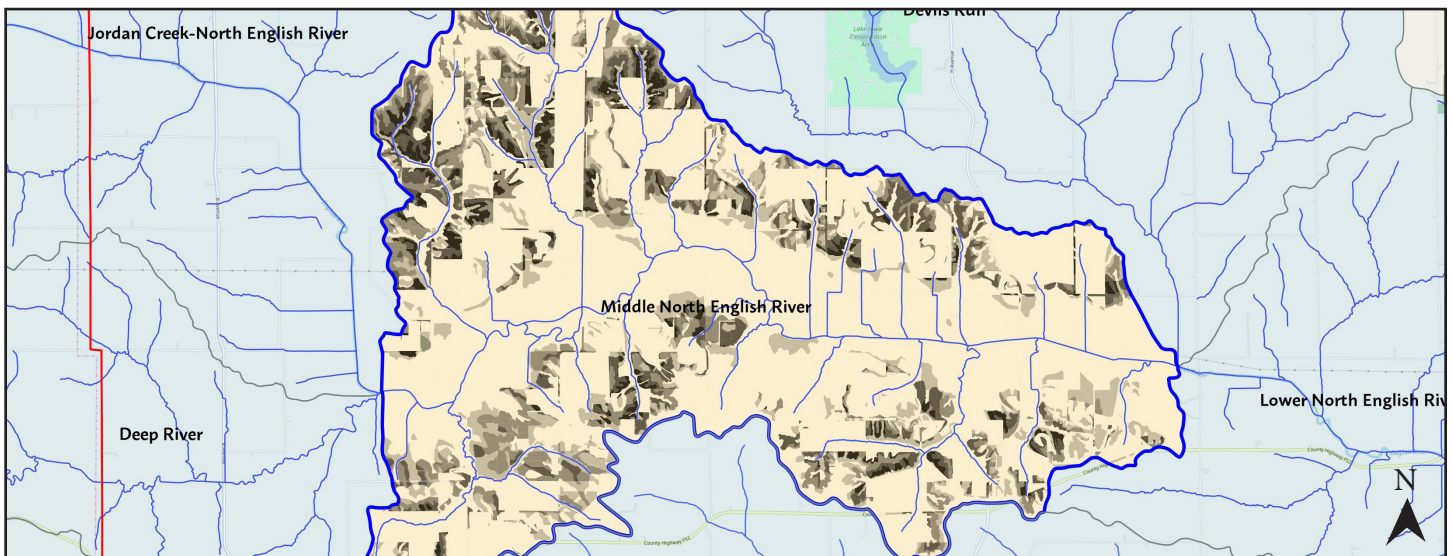


Figure 9. Estimated Sediment Delivery for the Middle North English River Subwatershed, 2017. Source: Iowa DNR

0-0.5 tons/acre/year 0.5-1 tons/acre/year 1-2 tons/acre/year 2-4 tons/acre/year 4-6.21 tons/acre/year

VIEW SOIL EROSION WEBMAPS FOR MIDDLE NORTH ENGLISH RIVER:

<http://www.englishriverwma.org/subwatershed-plans/erosion>

SECTION 5: AGRICULTURAL CONSERVATION PLANNING FRAMEWORK

The Agricultural Conservation Planning Framework (ACPF) is a digital toolbox watershed planning and research. Utilizing a geographic information system (GIS), ACPF processes topographic data for terrain in the watershed. These data can determine land and agricultural fields within a watershed that are most prone to contribute runoff to streams. Furthermore, ACPF can identify where in-field and edge-of-field practices could be installed throughout the watershed. Such practices include surface intake filters, restored wetland, grassed waterways, buffer strips, water and sediment control basins (WASCOBs), bioreactors, saturated buffers, and floodplain reconnections. The Iowa Flood Center executed the ACPF for all subwatersheds in the English River Watershed as part of the Phase II planning project.

POTENTIAL BEST MANAGEMENT PRACTICES

According to the ACPF results, there exists the potential for 79.46 miles of contour buffer strips, 27 bioreactors, 65 WASCOBs, 0 nutrient-removal wetlands, and 120.80 miles of grassed waterways in the Middle North English River subwatershed (Table 11). These practices are spatially depicted in Figure 10. In order to see the map in greater detail and to locate the exact position of potential practices, access the ACPF webmap via the link on the following page. Locations for BMPs are not prioritized in this analysis. Further analysis is needed to determine which practices present the highest potential.

Actual implementation of practices in the subwatershed was also analyzed in comparison to potential practices identified by the ACPF tool. Refer to the Iowa Flood Center’s full report for a complete analysis, which can be found on the English River WMA website.

Table 11. Count of Potential Best Management Practices as identified by ACPF in the ERW by subwatershed. *Source: Iowa Flood Center*

HUC-12	Area (acres)	CBS (miles)	Bio-reactors	WASCOBs	Nutrient Removal-Wetlands	Wetland Drainage (Acres)	% of HUC-12	Grassed Waterways (miles)
301	14,836	389.52	23	255	7	1,728.87	11.7 %	35.18
302	29,845	693.60	53	464	14	2,520.01	8.5 %	104.88
401	36,075	885.55	80	826	39	8,608.98	23.8 %	313.86
402	19,076	381.94	49	245	2	348.79	1.8 %	58.52
403	26,535	579.03	65	393	5	1,156.23	4.4 %	91.17
404	19,540	328.89	36	195	5	903.01	4.6 %	137.75
405	13,007	155.69	8	113	1	226.90	1.7 %	57.89
406	12,841	79.46	27	65	0	0	0.0 %	120.80
407	12,611	107.77	20	66	1	183.03	1.5 %	28.28
408	14,193	185.31	12	89	5	1,004.06	7.1 %	43.37
501	11,016	271.67	18	246	6	1,106.28	10.0 %	101.12
502	18,411	414.42	33	444	18	3,699.51	20.1 %	148.87
503	27,397	615.76	37	451	8	1,687.15	6.2 %	190.94
504	25,728	533.86	49	291	1	158.05	0.6 %	98.27

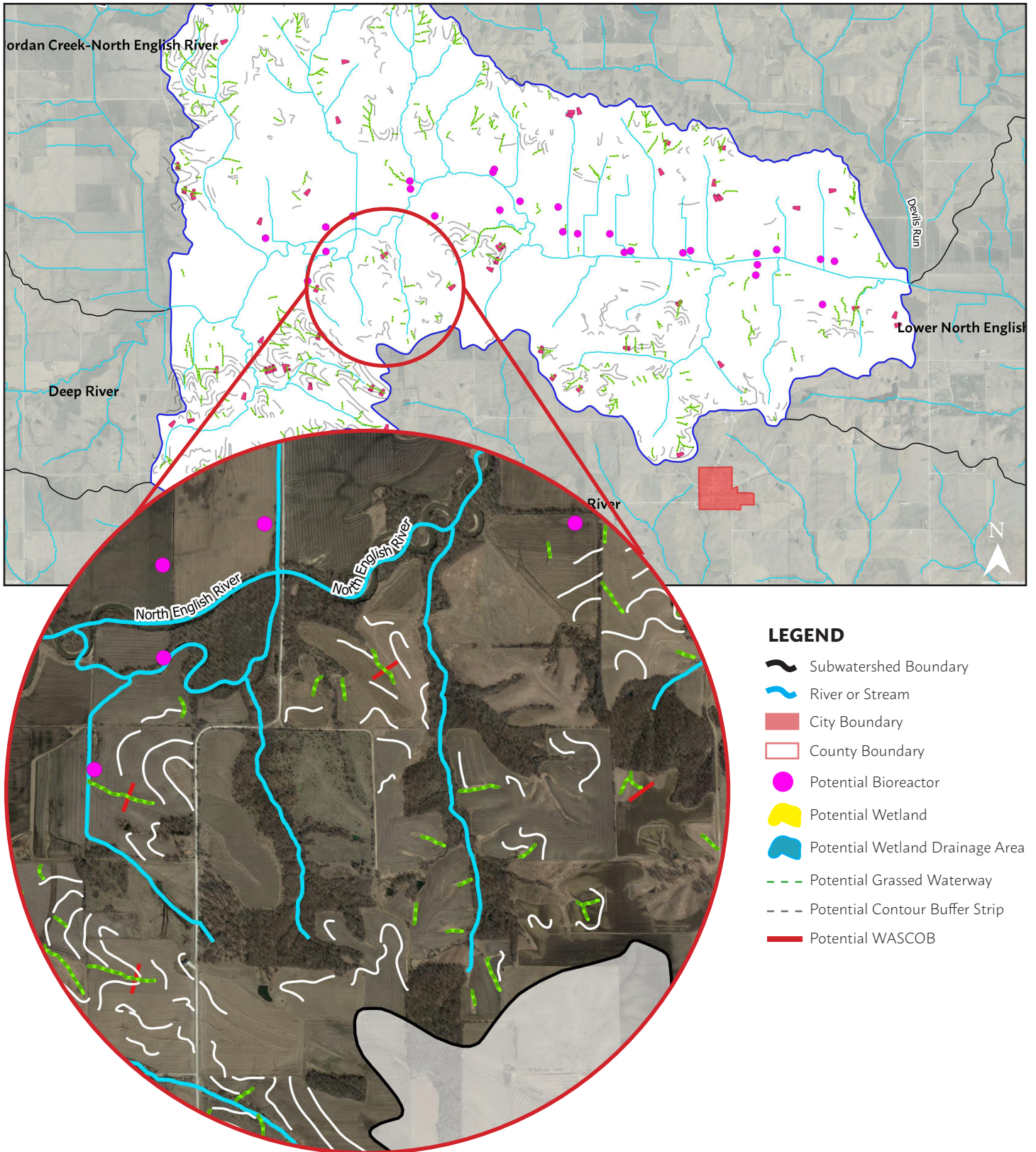


Figure 10. ACPF Model Results for the Middle North English River Subwatershed. Source: Iowa Flood Center

VIEW ACPF WEBMAP FOR THE MIDDLE NORTH ENGLISH RIVER:
<http://www.englishriverwma.org/subwatershed-plans/acpf>

SECTION 7: HAZARD MITIGATION

Hazard mitigation planning is defined as the effort to reduce loss of life and property by lessening the impact of disasters. Most counties in Iowa are required to complete a county-wide Hazard Mitigation Plan, which makes the county and its cities eligible for federal funding for emergency and non-emergency disaster assistance programs. English River Watershed stakeholders identified in Phase 1 Comprehensive Planning that reducing flood severity is a priority for watershed improvement. A brief analysis of flooding hazards is included in this plan as supplemental information and support for county Hazard Mitigation Plans. The [Iowa County Multi-Jurisdictional Hazard Mitigation Plan](#) was adopted in 2015 and expires in 2020.

EXTENT OF HAZARDS

As determined by the Federal Emergency Management Agency (FEMA), Figure 15 shown below represents the flood hazards that exist in the Devil's Run subwatershed. The flood hazard area accounts for roughly 12.6 percent of the subwatershed area. Riverine flooding can cause damage to crops, roads, homes, and businesses when river levels rise and overflow their banks. Urban areas, although none exist in the subwatershed, are also subject to impacts from flash flooding, or flooding that develops within 6 hours of the immediate storm.

Tables 12 and 13 show previous flooding events in the county from 2008 to present (August 2018) and public assistance costs per flood event. Not all assistance costs were incurred directly within the subwatershed because data is only available on the county level. The subwatershed covers about 3.4 percent of Iowa County's area. By contrast, the English River Watershed overlaps about 58 percent of Iowa County. Figures presented are not exhaustive; many flash flood events do not meet the threshold to trigger public assistance.



Figure 15. Flood hazard boundary areas for the Middle North English River Subwatershed. *Source: FEMA*

Table 13. 10-Year Disaster Assistance Funding by Flood Event in Iowa County. *Source: Iowa Homeland Security & Emergency Management (HSEM)*

Table 12. 10-Year Disaster Assistance Funding by Type of Work in Iowa County. *Source: HSEM*

Type of Work	Assistance Costs
Roads/Culverts	\$ 1,694,636.89
Debris Removal	\$ 28,080.32
Emergency Procedures	\$ 217,482.02
Total	\$ 1,940,199.23

Flood Event Period	Assistance Cost	Flood Height at English River Gauge in Parnell
May 25 – August 13, 2008	\$ 1,350,745.51	No historic data available
June 1 – August 31, 2010	\$ 140,890.92	No historic data available
April 17 – April 30, 2013	\$ 65,639.99	No historic data available
May 19 – June 1, 2013	\$ 123,608.19	No historic data available
June 26 – July 8, 2014	\$ 259,314.62	No historic data available
Total	\$ 1,940,199.23	

POTENTIAL LOSSES

Hazards United States (HAZUS) is a nationally-applicable, standardized method for estimating potential losses from floods and other hazards. Table 14 provides estimations of building and content damage from flooding events in ERW counties. There exists 0 structures vulnerable to losses from the 1 percent annual chance flood (red dots) and 1 structure vulnerable to the 0.2 percent annual chance flood (green dots) in the subwatershed (Figure 16).

Table 14. Estimated Losses from Flood Hazards by County in the ERW. Source: HSEM

County	Building Count	Estimated Building Cost	Estimated Content Cost	Estimated Building Damage	Estimated Content Damage	Combined Estimated Loss
Average Annual Loss Vulnerability						
Iowa	20	\$1,374,100.00	\$1,000,000.00	\$2,921.00	\$1,379.00	\$4,300.00
Poweshiek	5	\$407,220.00	\$203,610.00	\$5,274.00	\$2,563.00	\$7,837.00
Keokuk	2	\$11,620.00	\$5,810.00	\$484.00	\$268.00	\$752.00
100-Year Loss Vulnerability (1% Annual Chance Flood)						
Iowa	10	\$1,002,150.00	\$814,025.00	\$82,248.00	\$35,149.00	\$117,397.00
Poweshiek	4	\$372,360.00	\$186,180.00	\$60,882.00	\$34,394.00	\$95,276.00
Keokuk	2	\$11,620.00	\$5,810.00	\$5,653.00	\$3,117.00	\$8,770.00
500-Year Loss Vulnerability (0.2% Annual Chance Flood)						
Iowa	20	\$1,374,100.00	\$1,000,000.00	\$183,065.00	\$100,204.00	\$283,269.00
Poweshiek	5	\$407,220.00	\$203,610.00	\$83,011.00	\$50,406.00	\$133,417.00
Keokuk	2	\$11,620.00	\$5,810.00	\$5,997.00	\$3,289.00	\$9,286.00

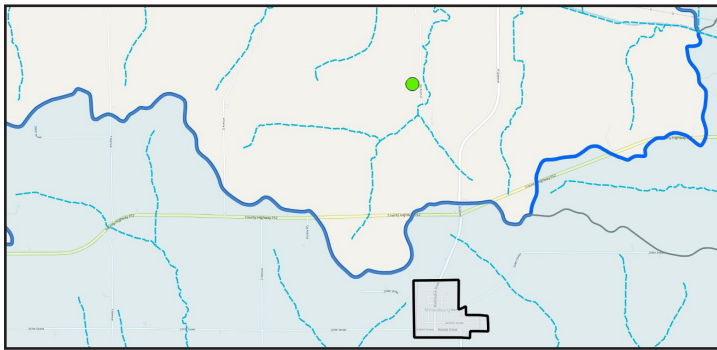


Figure 16. Vulnerable structures for flood hazards in the Middle North English River Subwatershed. Source: HSEM

VIEW INTERACTIVE HAZUS DATA:

<http://www.englishriverwma.org/subwatershed-plans/hazus>

The National Flood Insurance Program (NFIP) is a federal program that provides flood insurance for residential and commercial landowners in participating communities and counties (Table 15).

VIEW IOWA COUNTY NFIP FLOOD MAP:

<http://arcg.is/f84Wj>

Table 15. City or County Participation in NFIP. Source: FEMA

Municipality/Entity	Participation in NFIP
Grinnell	Yes
Guernsey	Yes
Montezuma	Yes
Webster	Yes
Kinross	Yes
Johnson County	Yes
Keokuk County	Yes
Iowa County	Yes
Poweshiek County	Yes
Barnes City	No
Deep River	No
Gibson	No
Keswick	No
Millersburg	No
Parnell	No
North English	No

SOCIAL VULNERABILITY

Community disaster resilience is the ability of people living in a subwatershed to plan and act collectively, using local capacities to mitigate, prepare for, respond to, and recover from hazards like flooding. Understanding the social barriers present in a subwatershed may aid in targeting specific actions that watershed residents can utilize when preparing for or responding to a flood event.

The Iowa Flood Center Resilience Program conducted social vulnerability research as part of the Iowa Watershed Approach in 2018. The social vulnerability (SVI) is a combined metric of 12 indicators: African American, language barrier, renters, unemployed, poverty, children, elderly, Hispanic or Latino, low education, female head of household, disabled, and no vehicle access. They represent a percent of the population at the census tract level.

SVI scores are ranked on a scale of low/low-medium (0.000 - 0.300), medium (0.301 - 0.450), and medium-high/high (0.451-max). Table 16 displays the SVI and the top vulnerability indicators for each of the census tracts that overlap the ERW. The highlighted row(s) represent a census tract(s) that overlaps the subwatershed.

Table 16. Top Vulnerability Factors in English River Watershed by Census Tract. *Source: IFC, ACS 2016 5-Year Estimates*

Census Tract	County	Incorporated Cities	SVI	1 st Indicator	2 nd Indicator	3 rd Indicator
3704	Poweshiek	Grinnell	0.725	2 % Black or African American	24 % Age 65 or Older	7 % Unemployed
9601	Washington	Kalona, Riverside	0.449	27 % Children	4 % Limited English	13 % No High School Diploma
3705	Poweshiek	Montezuma, Guernsey, Deep River	0.44	1 % Black or African American	12 % Poverty	5 % Unemployed
9501	Mahaska	Barnes City	0.418	2 % Black or African American	7 % Unemployed	27 % Children
9602	Washington	Wellman	0.411	1 % Black or African American	23 % Children	3 % Hispanic or Latino
802	Keokuk	Gibson, Keswick, Webster	0.404	7 % Unemployed	15 % Poverty	25 % Children
9603	Iowa	North English, Millersburg	0.401	27 % Children	11 % Poverty	0.5 % Black or African American
104	Johnson	None	0.381	2 % Black or African American	5 % Limited English	12 % No Vehicle Access
801	Keokuk	Kinross	0.375	27 % Children	13 % Poverty	4 % Unemployed
3702	Poweshiek	Grinnell	0.363	5 % Unemployed	20 % Age 65 or Older	3 % Hispanic or Latino
3701	Poweshiek	None	0.339	5% Age 65 or Older	5% Unemployed	5 % Black or African American
9604	Iowa	Parnell	0.326	0.5 % Black or African American	10 % Poverty	19 % Age 65 or Older

Social vulnerability maps are available to the public online via the Iowa Flood Center’s Iowa Watershed Approach mapping application. Click the link below and then select your watershed of interest. Then, hover over the “IWA” icon within the menu on the top-right side of the page. From there, you will see a “Flood Resilience” heading and a button to turn on the social vulnerability map layer. Users can click around on the various census tracts within the English River Watershed to see more information regarding the social vulnerability, including the top three indicators of vulnerability for that particular census tract in comparison to the rest of the watershed.

VIEW FLOOD RESILIENCY MAP:

<http://iwa.iowawis.org/app/>

VIEW SOCIAL VULNERABILITY MAPS:

<http://www.englishriverwma.org/subwatershed-plans/resilience>

SECTION 8: ACTION PLAN

This plan is intended to serve as a guide in decision-making and planning by the ERW, local agencies, local government, and citizens. Mitigation actions stated in this section are the result of data obtained through the Phase 2 planning process, the 2018 Conservation Survey, and other stakeholder input. The priority mitigation actions should be re-evaluated at least every 5 years and adjusted as necessary to keep pace with accomplished projects, current policies and practice, and availability of funding.

Mitigation actions presented in this plan (Table 17) supplement recommendations stated in Iowa County’s Hazard Mitigation Plan. The following recommendations for the Middle North English River subwatershed are based on a comparative analysis among all 14 subwatershed analyzed in this planning project.

In comparison to subwatersheds in the ERW, the Middle North English River subwatershed ranks high for E.Coli bacteria, total phosphorus, and orthosphates with respect to water quality contamination. Soil erosion rates are in the middle range among the fourteen subwatersheds. BMPs that can be installed through cost share via the Iowa Watershed Approach project should be focused on controlling the movement of sediment, which can negatively impact streams through excess levels of phosphorus and bacteria. Suitable locations for agricultural BMPs (grassed waterways, WASCObS, contour buffer strips) can be found in Section 5. These locations should overlap with areas that are highly prone to soil erosion, according to the RUSLE analysis presented in Section 4. Locating practices according to the ACPF and RUSLE analyses results in more impactful practices and better utilizes limited funding.

FUNDING SOURCES

Mitigation actions can be financially supported through a variety of state and federal programs (Table 17). Examples of BMPs that can be funded by each program are shown in Table 18. More information on each program can be found on by accessing the links shown for each program. The following table is not exhaustive.

Table 17. State and Federal Conservation Programs. *Source: ERW*

Program	Eligible Applicants	Funding	Notes
Hazard Mitigation Grant Program (HMGP) https://bit.ly/2wiKqQ7	Individuals, state agencies, tribal agencies, private non-profits, municipalities, counties	Grants vary	<ul style="list-style-type: none"> Requires project to be directly attributable to action stated in local Hazard Mitigation Plan Non-profits must partner with municipality or county
Pre-Disaster Mitigation Program (PDM) https://bit.ly/2wiKqQ7	State agencies, U.S. territories, tribal agencies, municipalities, counties	Grants vary	<ul style="list-style-type: none"> Requires project to be directly attributable to action stated in local Hazard Mitigation Plan Funded annually by Congressional action and subject to a national competition
Iowa Watershed Approach (IWA) https://bit.ly/2P7ibSi	Individuals, municipalities, counties, private non-profits	75% cost share, no max as funds are available	<ul style="list-style-type: none"> Project must be within eligible area defined by HUD Funding period closes December 2022
Water Quality Initiative (WQI) https://bit.ly/2BSCjWG	SWCDs, counties, county conservation boards, municipalities, private non-profits, public water utilities, WMAs	Grants vary; Typical range: \$100-\$300K	<ul style="list-style-type: none"> Established in 2013 to help implement Nutrient Reduction Strategy Funding is steered toward priority watershed projects across the state
EPA 319 Non-Point Source Program https://bit.ly/2BTXTtS	WMAs, SWCDs	Grants vary; Typical range: \$100-\$300K	<ul style="list-style-type: none"> Funding includes technical assistance, financial assistance, demonstration projects, training Funding decisions are made by states; states receive annual allocation from EPA

Table 18. Mitigation Action Plan for the Middle North English Subwatershed. Source: ERW

Plan Objective	Action Number	Mitigation Action	Recommended Practices	Recommended Sites for Implementation	Timeframe	Potential Funding Source	Potential Partners	Jurisdiction Benefitting from Action	Action Priority
1	1.1	Flood protection of critical facilities along Gritter Creek in the City of North English	None	None	N/A	N/A	N/A	N/A	None
	1.2	Flood protection of bridges in Gritter Creek subwatershed	Perennial Cover, Floodplain Restoration	See HAZUS Analysis (Section 7)	5-7 Years	HMGF, PDM, IWA	Secondary Roads, Iowa/Keokuk SWCD, NRCS	Iowa/Keokuk Counties, North English	Medium/High
	1.3	Flood protection for population safety in Gritter Creek subwatershed	Detention Basins, Ponds	See Urban Analysis (Section 6)	1-3 Years	IWA, PDM	City of North English, ERW	City of North English	Low
2	2.2	Acquire property at risk of flooding near Gritter Creek; convert to open space	None	None	N/A	N/A	N/A	N/A	N/A
	2.3	Elevation of structures at risk to flooding in North English	None	N/A	N/A	N/A	N/A	N/A	N/A
3	3.1	Improve water quality in urban areas in Gritter Creek subwatershed	Perennial Cover, Grass, Stormwater Detention Basin, Urban BMPs	See Urban Analysis (Section 6)	5-7 Years	IWA, WQI	Iowa/Keokuk SWCD, NRCS, ERW	City of North English	Medium/High
	3.2	Improve water quality in rural areas in Gritter Creek subwatershed	Saturated Buffers, Bioreactors, Wetlands, Sediment Detention Basins	See Soil Erosion and ACPF Analysis (Sections 4 & 5)	1-3 Years	319, IWA	Iowa/Keokuk SWCD, NRCS, ERW	Iowa/Keokuk Counties	High
4	4.1	Provide flood protection for roads and in Gritter Creek subwatershed	Floodplain Restoration, Perennial Cover	See HAZUS Analysis (Section 7)	5-7 Years	HMGF, PDM, IWA	Secondary Roads, Iowa/Keokuk SWCD, NRCS	Iowa/Keokuk Counties, North English	Low

ACRONYMS

ACPF	Agriculture Conservation Planning Framework	ISWMM	Iowa Stormwater Management Manual
BMP	Best Management Practice	IWA	Iowa Watershed Approach
DEP	Daily Erosion Project	NFIP	National Flood Insurance Program
EPA	Environmental Protection Agency	NRCS	Natural Resource Conservation Service
ERW	English River Watershed	NRS	Nutrient Reduction Strategy
FEMA	Federal Emergency Management Agency	SCS-CN	Soil Conservation Service - Curve Number
HSEM	Homeland Security & Emergency Management	SWCD	Soil & Water Conservation District
HUC	Hydrologic Unit Code	WMA	Watershed Management Authority

ACKNOWLEDGEMENTS

This report is one of fourteen subwatershed plans developed as part of Phase 2 planning in the English River Watershed. These plans would not have been possible without the hardwork by the Iowa Flood Center and their participation in the National Disaster Resiliency program, a federal grant administered by the Housing and Urban Development department. The following is a list of project partners that were instrumental in providing data, technical assistance, and support through the planning process.



The Iowa Flood Center



Iowa County, Iowa



The University of Northern Iowa's GeoTREE Center



The Iowa Department of Natural Resources



Iowa Homeland Security & Emergency Management



The Iowa Water Center & The Daily Erosion Project



Center for Evaluation and Assessment



The State Hygienic Laboratory



Iowa Department of Agriculture & Land Stewardship



Eldon C. Stutsman, Inc.

CONTACT INFORMATION

All of the data, assessments, and tools highlighted in this plan are available to the public. Please contact staff at the English River Watershed to discuss how we can assist you in conservation planning and implementation.

The English River Watershed organization operates out of the Kalona City Hall offices. Our team is available by email, phone, or via our website: (<http://englishriverwma.org/contact>).

Jody Bailey, Watershed Coordinator
jbailey@englishriverwma.org
 (319) 656-2310
 511 C Avenue, Kalona IA, 52247